

60cm Door Template Part Number 675001800357



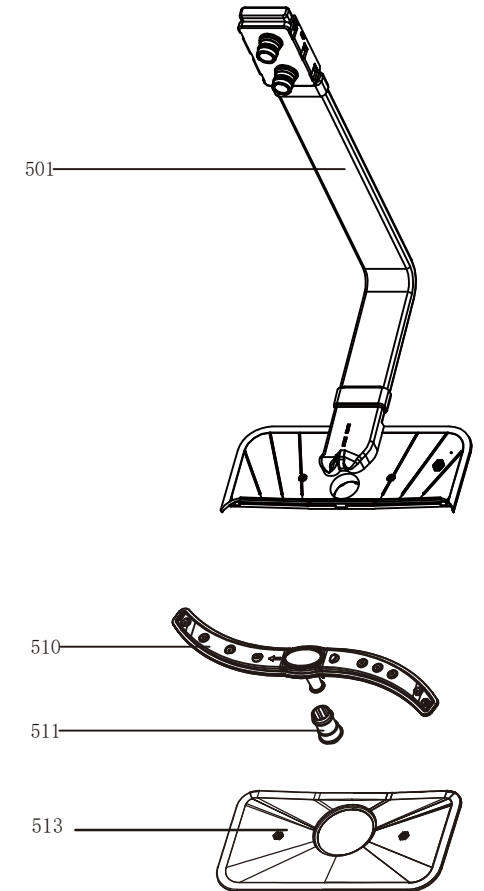
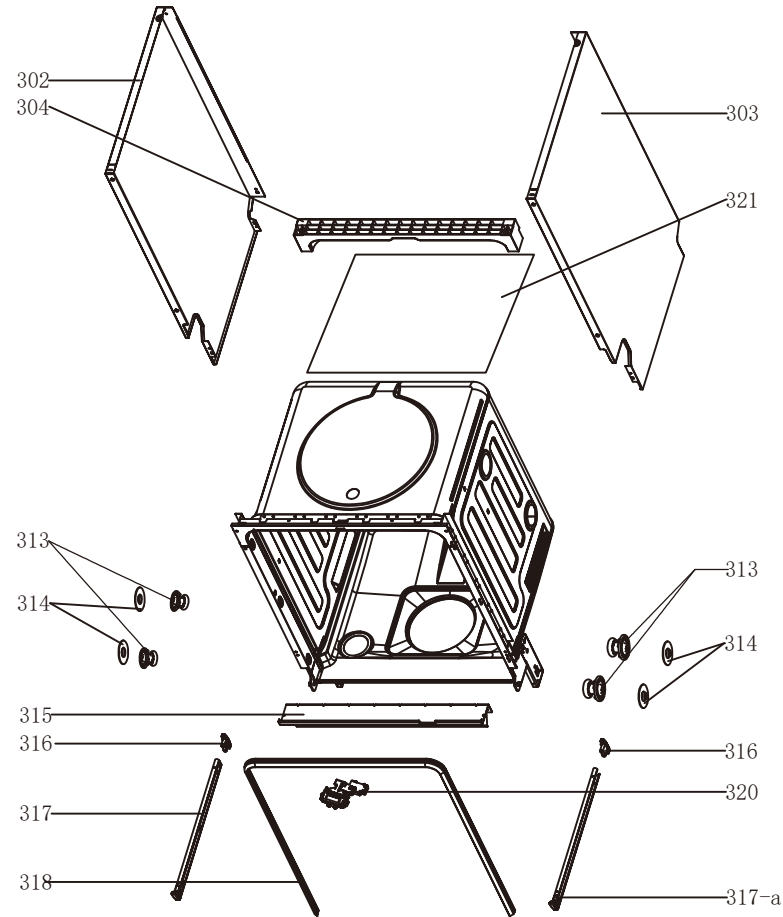
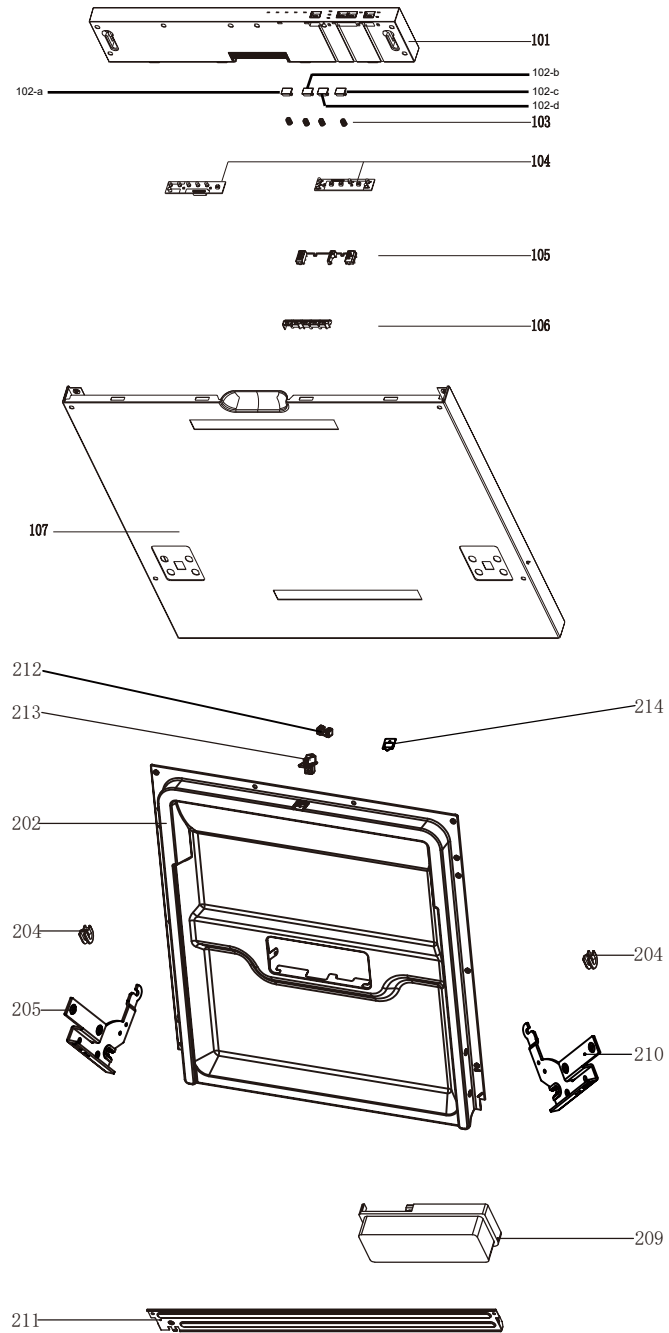
Dishwasher:UBMIDW60

Version:01

Date:2016-10-31

Product reference code:UBMIDW60

UBMIDW60 Exploded drawing(1)



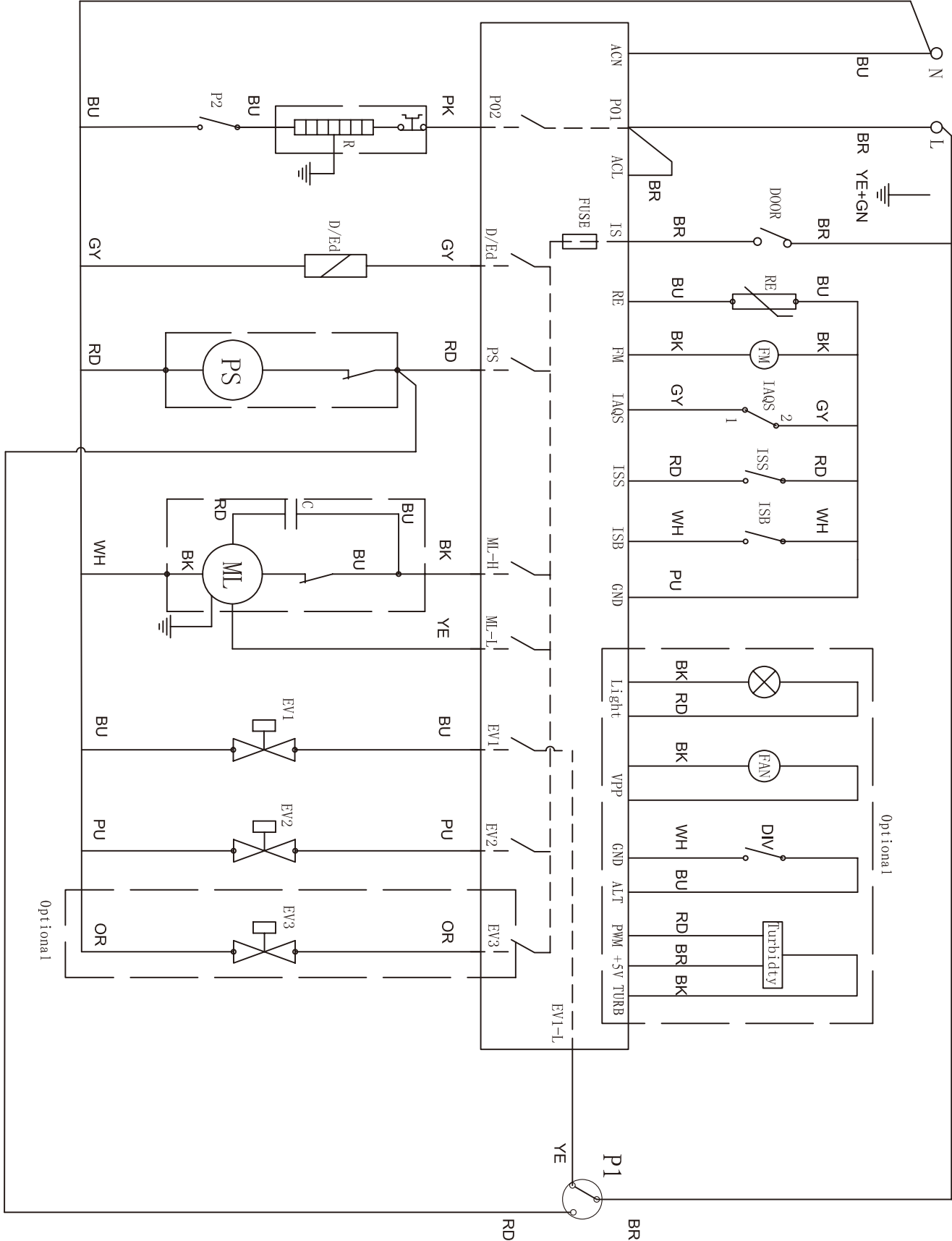
01	update file	Eason	2016.10.31
00	New document	Eason	2016.05.31
Index	Modify description	Modified by	Date

UBMIDW60 parts list

NO.	Part code	Ref Part No.	Description	Qty.	Remark
101	25107545	12176000A16482	control panel	1	add
102-a	25107550	12176000016725	program button	1	add
102-b	25107555	12176000016724	delay button	1	add
102-c	25107560	12176000016727	power button	1	add
102-d	25107565	12176000016728	1/2 Button	1	add
103	672000100089	12976000000141	button spring	4	
104	25107570	17176000014963	Dashboard	1	add
105	25107575	12176000016705	delay and half load light guide	1	add
106	25107580	12176000016703	program light guide	1	add
107	672001801317	12276000006322	out door	1	
202	672002200523	12276000005191	inner door assembly	1	
204	672002300049	12176000003629	friction strip hooking clamping	2	
205	672001400062	12276000001731	left hinge assembly	1	
209	674000800070	17476000001467	dispenser	1	
210	672001400061	12276000001778	right hinge assembly	1	
211	672001300077	12276000001805	hinge join board	1	
212	673001320041	12176000008565	Lock buckle fixing block	1	
213	673001320039	12176000009495	door lock hook	1	
214	673000905033	12676000001038	Waterproof silica gel pad	1	
302	672001607099	12276000000979	left side panel assembly	1	
303	672001600610	12276000001132	right side panel	1	
304	673003100024	12176000003869	upper back support	1	
313	673001401022	12176000010412	rail support assembly	4	
314	673001300555	12176000008573	basket guider supporting holder	4	
315	672002300116	12276000001833	anti-noise borad	1	
316	673001300803	12176000008496	cutlery shelf guider link stopper(back)	2	
317	672001700025	12276000001357	upper basket guider(left)	1	
317-a	672001700026	12276000001360	upper basket guider(right)	1	
318	673001700132	12676000000859	tank gasket	1	
320	674000301022	17476000000035	door switch	1	
321	673000102014	12176000010248	back cover board	1	
401	674000000186	17476000000312	power cord	1	
402	673002800187	12176000010640	softener cover	1	
403	674000700064	17476000001365	softener	1	new
	674000700049	17476000001331			2016 October to stop using
404	673001400083	12176000009490	power cord clasper	1	
407	673001400413	12176000009726	foot	3	add
408	673001001010	12976000000399	door rope	2	
411	672000190033	12976000000203	door spring assembly	2	
412	672001100016	12976000001001	adjust screw of door spring	2	
413	25107590	12176000019571	base tray	1	new
	673000100081	12176000003073			2016 October to stop using
414	25107595	12176000019565	base cover	1	new
	673000101125	12176000003085			2016 October to stop using
415	673000900354	12676000000138	drain hose assembly	1	
416	673002700611	12176000003906	air breather assembly	1	
417	673001500107	12676000000713	seal	1	
418	673001600099	12176000013663	air breaker nut	1	
419	674000302020	17476000001222	pressure switch	1	
420	25107295	12276000008925	pump support ASSEMBLY	1	
421	673000900289	12676000000140	inlet hose of air breather	1	
423	674000200054	17476000001144	inlet valve	1	
424	674010030006	17476000001137	overflow switch	1	
426	673001400414	12176000003125	overflow switch seat	1	
427	673001490013	12876000000050	sleeve cover	1	
428	25107600	17176000014765	PCB	1	
429	673002400223	12176000003751	pcb seat	1	
430	673002400224	12176000003853	PCB Box	1	
433	60501375	12676000001801	Softener-seals	1	
434	673001600074	12176000009513	softener nut	1	
501	673000903005	12176000009430	inner pipe	1	
510	673000330015	12176000009161	lower sprayer	1	
511	673001300548	12176000008645	sprayer seat	1	
513	673002500134	12176000003689	plane filter	1	
601	60501365	12676000001461	seals	1	
604	673001300644	12176000009640	filter handle	1	
605	672000700007	12976000000327	396 clamp	2	
606	673002500111	12176000003676	cylinder filter	1	
607	673000900406	12676000000146	inlet pipe	1	
610	674000600168	11001011000449	Permanent magnet synchronous pump	1	
611	25107605	12176000016228	Sump assembly	1	
612	673000902001	12676000000651	pvc pipe	1	
613	25107540	12676000001521	Outletpipe	1	new
	673000902000	12676000000168			2016 October to stop using
614	674005600112	17476000001561	induction pump	1	
618	674001100084	17476000001408	heating elements	1	
624	673000900407	12676000000100	inlet pipe	1	
625	672000701001	12976000000308	clamp	2	
628	673000903015	12676000000947	inner drain pipe	1	
629	674000900053	17176000000311	thermostat	1	
701	673003200063	12176000002705	cutlery basket	1	
702	672000810662	12976000000724	basket assembly	1	
703	25107610	129760000003132	lower basket assembly	1	add
704	673003200058	12176000002821	Knife and fork rack	1	
705	673000310035	12176000009173	MIDDLE SPAYER ASSEMBLY	1	
710	25107255	12176000015504	Inlet Pipe Assembly	1	add
711	673002200165	12176000010312	salt filler	1	
712	60101125	17476000006665	Wireharness	1	new
	674000102202	17476000000726			2016 October to stop using
720	670400047004	12976000000292	accessory bag	1	

220-240V/50HZ

UBMIDW60 Wiring diagram



UBMIDW60 Exploded drawing(2)

