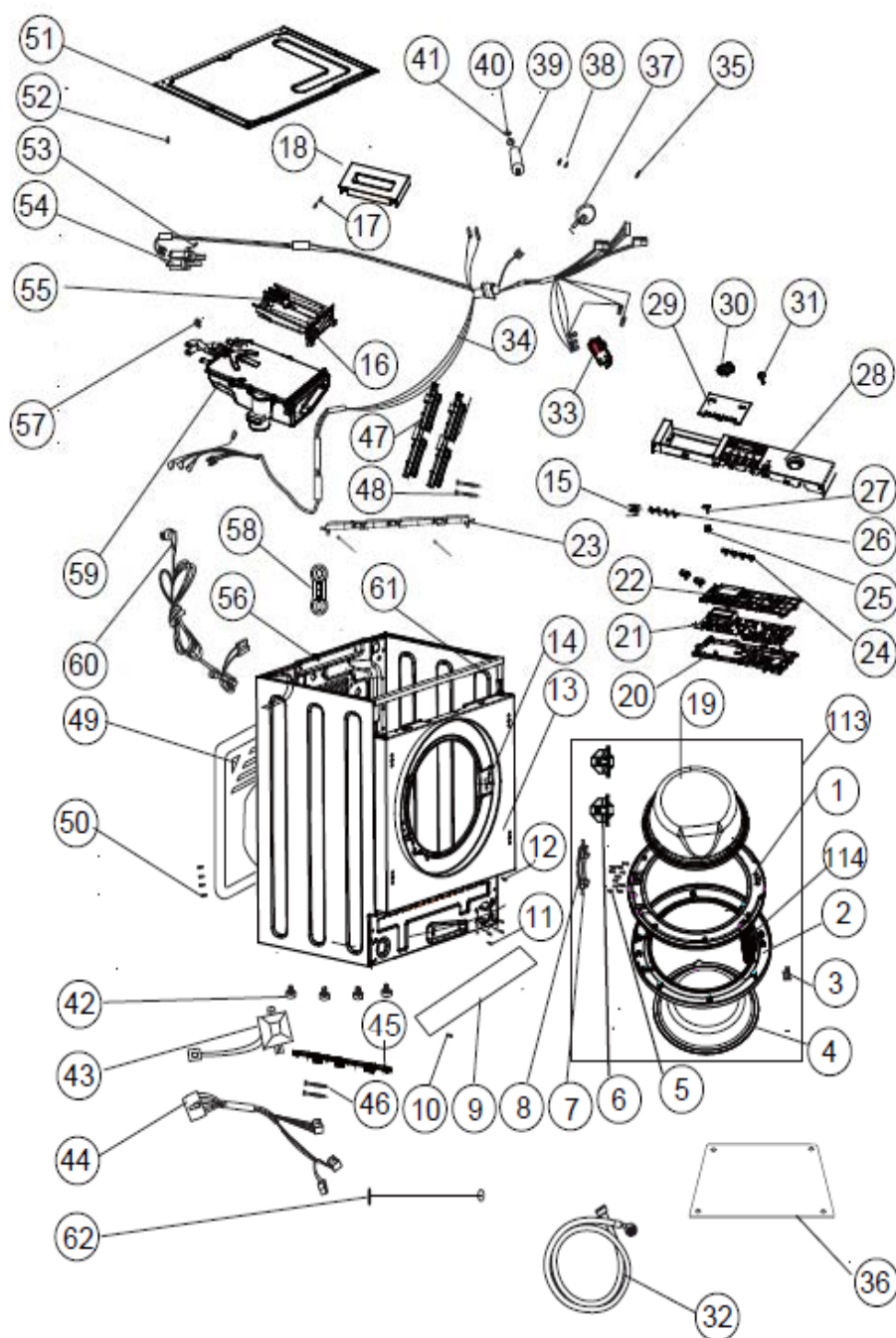


Washing machine: BWM60CL

Version: 01

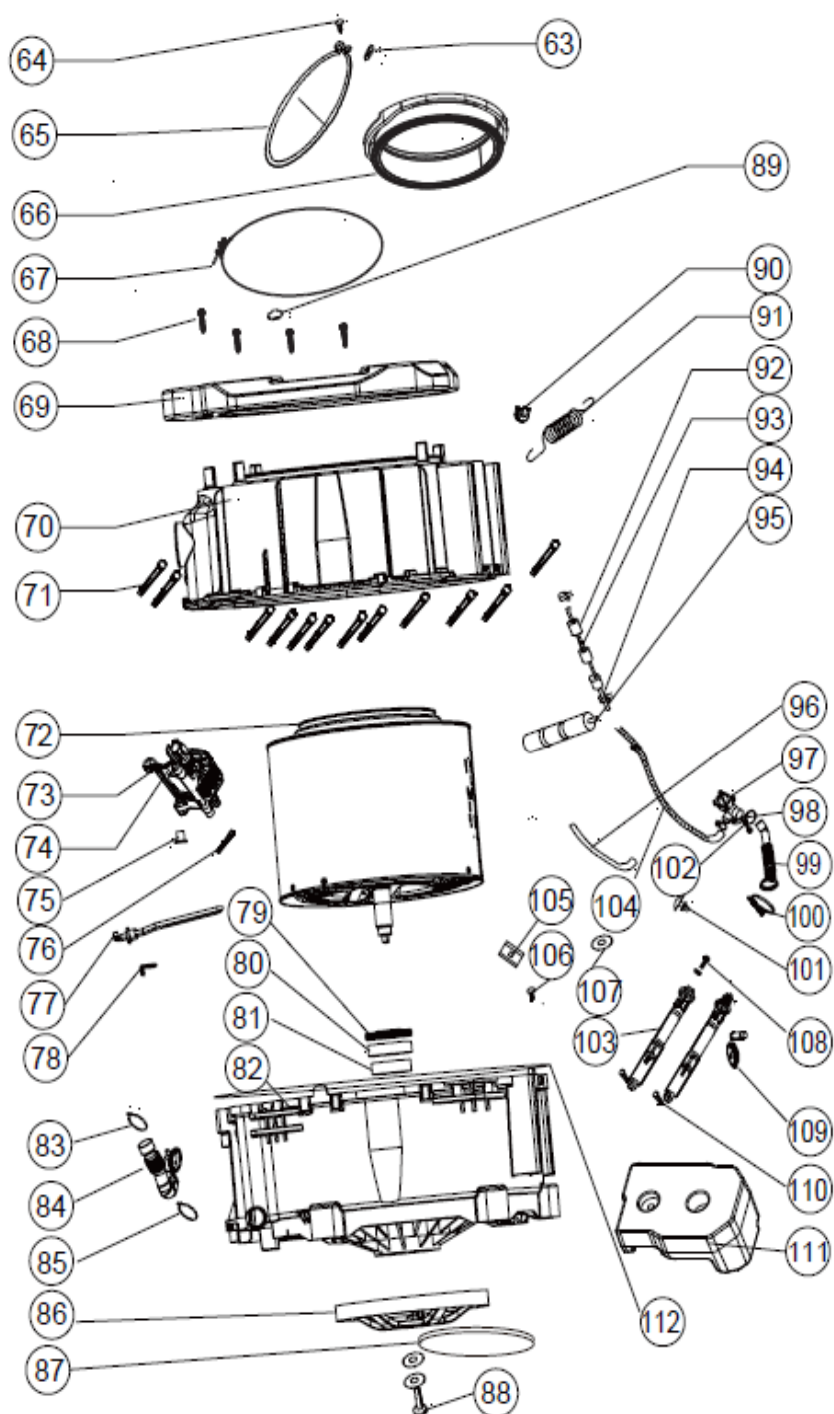
Date: 2014-03-03

BWM60CL Exploded drawing



01	Change the codes of No.38, 65 and 72, add No.112~114	Paul	2014-3-3
00	New document	Paul	2013-12-27

BWM60CL Exploded drawing



01	Change the codes of No.38, 65 and 72, add No.112~114	Paul	2014-3-3
00	New document	Paul	2013-12-27

BWM60CL parts list

NO.	Part code	Part description	Qty
1	0020203438	inner frame of sight window	1
2	0020203436A	outer frame of sight window	1
3	0020100284A	Door hook	1
4	0020203475	Screen of sight window	1
5	00330810009	Tapping screw(Screw torque:1.2 ~ 2N.m)	10
6	0020103078A	hinge	2
7	0020201212	Hinge sheath	2
8	0020100751	door hinges	1
9	0020203510	lower plaque	1
10	00330810009	Tapping screw(Screw torque:1.2 ~ 2N.m)	1
11	00216910320111A	Screw	3
12	00216910320111A	Screw	1
13	0020806158H	former board assembly	1
14	0020600029	door lock fastening screw(Screw torque:1.2 ~ 2N.m)	2
15	0020102832	spring of button	1
16	0020203445	splitter box	1
17	00330810010	Tapping screw	2
18	0020506917K	handle of dispenser	1
19	0021400015	Glass of sight window	1
20	0020203446	PCB box	1
21	0021800032A	PCB	1
22	0020203447	PCB box cover	1
23	0020203374A	go trough short	1
24	0020203423A	buttons	4
25	0020203425A	start/pause buttons	1
26	0020203451	guide beam	1
27	0020203452	guide beam	1
28	0020506916G	control panel	1
29	0020506957D	decorating plate	1
30	0020203444A	knob	1
31	0020203433	knob shaft	1
32	0020300158A	Filling pipe	1
33	0024000128A	Door lock	1
34	0020400256B	control cable assembly	1
35	0020600029	door lock fastening screw(Screw torque:1.2 ~ 2N.m)	1
36	0020501889A	bottom cover	1
37	0024000317	water level sensor	1
38	00216910320111A	Screw	1
39	0020400491A	radio interference suppressor	1
40	00217440540612	spring washer	1
41	00215000000001A	nut	1
42	0020300170E	foot	4
43	0024000152	reactance	1
44	0020400087B	wire of motor	1
45	0020203374A	go trough short	1
46	00221150320000	Clip	1
47	0020203315	Wiring duct (short)	2
48	00221150320000	Clip	1
49	0020100505C	back plate(white)	1
50	0020600179	Earthing screw	1
51	0020100770A	top cover	1
52	00216910320111A	Screw	1
53	00221150320000	Clip	2
54	0024000126B	Water electromagnetic	1
55	0020203198A	Syphon	1
56	0020809334	cabinet assembly	1
57	00218870330611A	Clip	2
58	0020803673	magnet assembly	2

59	0020805732AD	storage tank assembly	1
60	0020400196B	Power cable	1
61	0020100720E	shell anterior strengthen pieces	1
62	0020202683	plastic joy-stick	1
63	00214800021100	Nylon nut	1
64	00215100000200	Screw	1
65	0020600081	Front fastening ring of the porthole	1
66	0020300767	Cushion of sight window	1
67	0020600211A	back tighteningring of cushion of sight window	1
68	0020600285	Screw(Screw torque:10 ~ 12N.m)	4
69	0020100771B	front couterweight	1
70	0020203402	front plastic tub	1
71	00215100001000	bolt(Screw torque:4 ~ 6N.m)	15
72	0020808361	Drum assembly	1
73	0024000133C	motor	1
74	0020202717	Motor bushing	2
75	0020300466	motor rubber bush	2
76	00215100001000	bolt(Screw torque:4 ~ 6N.m)	2
77	0024000279	heater pipe	1
78	0020100432	rack of heating element	1
79	0020300340	oil seal	1
80	0020600069	bearing(6305)	1
81	0020600157	bearing(6306)	1
82	0020806090	Outer cylinder assemble(Outer cylinder,Seal of tub,oil seal,bearing(6305),bearing(6306))	1
83	00218870330611A	Clip	1
84	0020300359	Hose connecting dispenser to cylinder	1
85	00218230700611A	clip of inlet hose	1
86	0020100431	Driven pulley	1
87	0020300385	PH belt	1
88	00215000014000B	bolt	1
89	00215000014200A	washer	8
90	0020203391	spring stents	2
91	0020600210	spring	2
92	00212500011100	Self-adhere sponge of pressure switch	4
93	00214401362902A	pipe for pressure switch	1
94	0020600050A	drain pipe clip(pump)	1
95	0020202906	air trap	1
96	0020300379A	exhanstell pipe of drain pump	1
97	0022150033660401A	Drain pump	1
98	0020600050A	drain pipe clip(pump)	1
99	0020300387A	Connector hose	1
100	00297023000100A	hose clip connecting tub and pump(on tub)	1
101	0020203456	plastic hole plug	1
102	00215200294400A	clip of hose connecting tub and pump	1
103	0020600212	vibration damper	2
104	0020300148	drain hose	1
105	0020102938C	retainer of Door hinge	2
106	0020600360	bolt	2
107	00221152310002A	Blower fixing nut	2
108	0020600358	bolt	2
109	00215000035200	loser rubber washer	2
110	0020202225	Pin of shock absorber	2
111	0020300344	Upper counterweight	1
112	0020300510	seal ring	1
113	0020808072D	Door assembly	1
114	0020300788A	RUBBER MAT	1