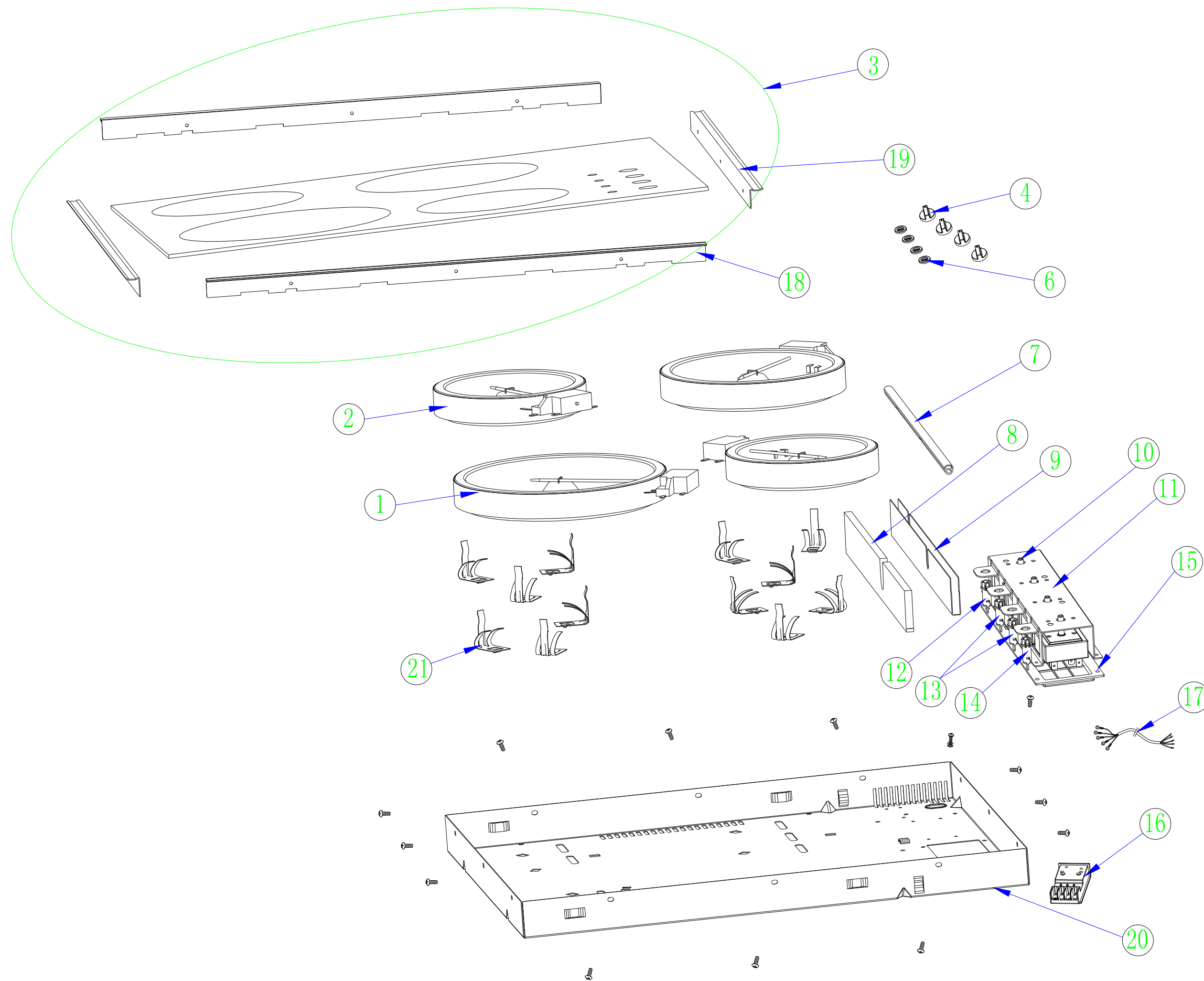

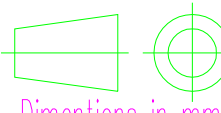


REF	Model
EC60	EC60
EC60B	EC60
EC60E	EC60



EC60				
S/N	Ref code	Description(en)	QTY.	Supplier code
1	69404995	single loop hob(1800W)-Ceramic hob-EC60	2	303203501014
2	69405000	single loop hob(1200W)-Ceramic hob-EC60	2	303203501013
3	69405005	Ceramic glass assembly-Ceramic hob-EC60	1	303207400067 303207400066
4	60701575	Knob(silver)-Ceramic hob-EC60	4	541300300010
	60703035	Knob(black)-Ceramic hob-EC60	4	541300300006
6	69405015	Silicone ring-Ceramic hob-EC60	4	
7	69405020	silicone sealed strip-Ceramic hob-EC60	1	303207900037
8	69405025	adiabatic cotton-Ceramic hob-EC60	1	303202804183
9	69405030	adiabatic bracket-Ceramic hob-EC60	1	303207400068
10	69407905	Energy adjuster-Ceramic hob-EC60	4	541600300002
11	69405040	knob bracket-Ceramic hob-EC60	1	303207800272
12	69405045	Pilot lamp Assembly-Ceramic hob-EC60	1	
13	69405050	Pilot lamp Assembly-Ceramic hob-EC60	2	
14	69405055	Pilot lamp Assembly-Ceramic hob-EC60	1	
15	69405060	Fixing Box for knob-Ceramic hob hob-EC60	1	303207300267
16	69405065	junction port holder-Ceramic hob-EC60	1	
17	60100220	power cord-Ceramic hob-EC60	1	
18	55001095	Merge To 69405005(NO.3)	2	303207400067
19	55001100	Merge To 69405005(NO.3)	2	303207400066
20	55001130	base-Ceramic hob-EC60	1	541400000007
21	25102610	spring bracket-Ceramic hob-EC60T2	12	541400200002

06	modify the supplier code of knob(No.4)	Paul	22-01-14	06
05	add the code of black knob(No.4)	Paul	25-12-13	05
04	change the ref code of No. 10 and No.20	Paul	2013.4.12	04
03	change the sign of NO.3,18 and 19	Paul	2012.9.15	03
02	Add model EC60E, add code of number 21	Bon.Liu	2010.7.21	02
01	add midea internal code, add No. 18~20, combine with EC60B	Bon.Liu	2010.4.3	01
00	New Document	Bon.Liu	2009.12.05	00
Index	Modify Description	Modified by:	Date	Mod:

<div> <b>ELECTRODOMESTICOS S.L.</b></div>		Name:	Date:	Material:	Model:		
		Drawed:	Bon Liu	2009.12.05	Weight:	see note	
		Checked:			Colour:	N°Pieces	Reference:
		Page:			Destiny:	see note	
<div> Dimentions in mm</div>		DIM without tolerance					
		.....6   >6...30   >30...120   >...120					
		±0.1   ±0.2   ±0.3   ±0.5					
		Scale:	Denomination:				
		-/-					