

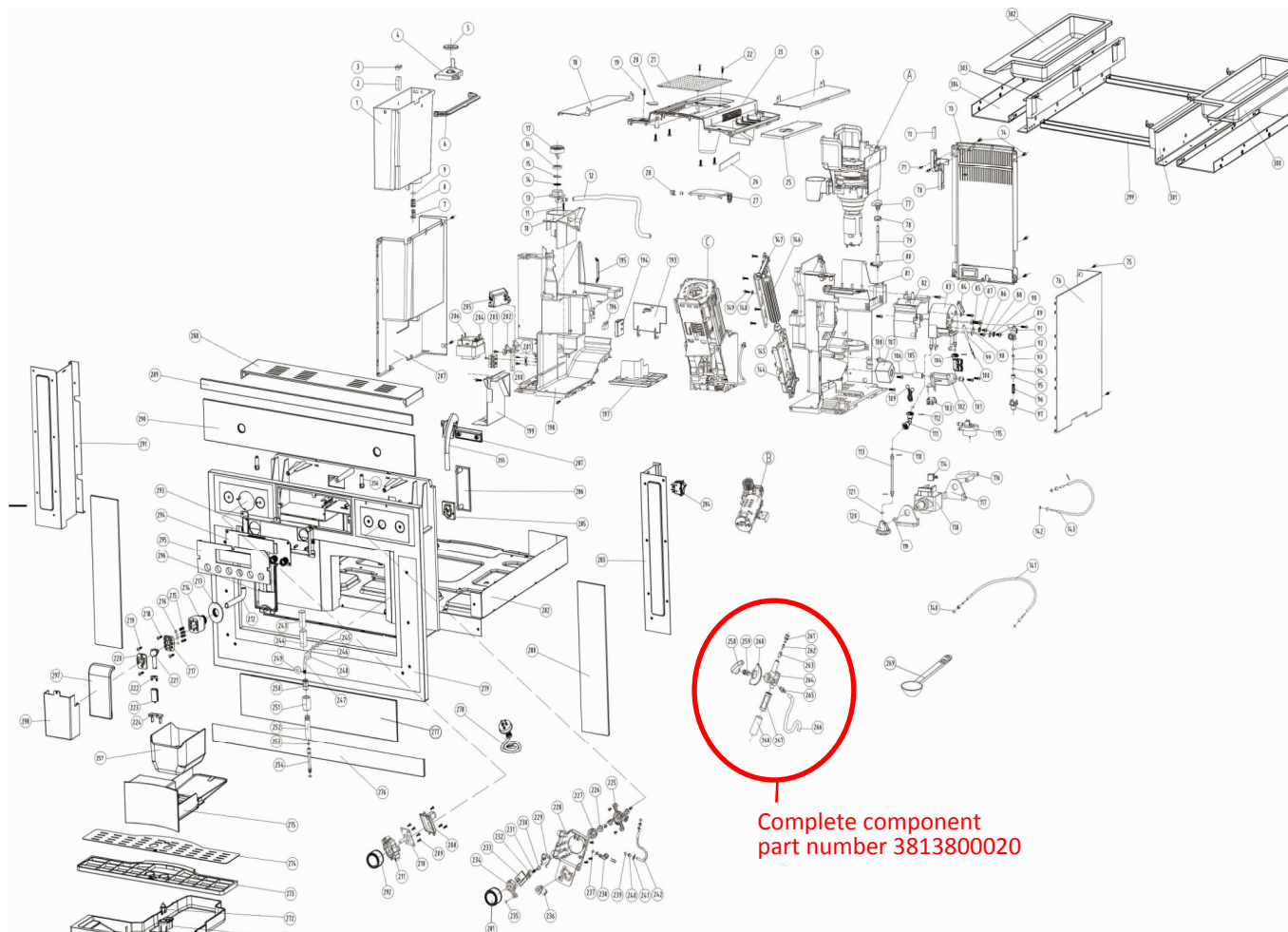


coffee machine:KC545CF

Version: 00

Date: 2014-04-17

KC545CF Exploded drawing



00	New document	Paul	2014-4-17
Index	Modify description	Modified by	Date

KC545CF Parts list			
No.	Part code	Part description	Quantity
1	3811010010	water tank	1
2	3811020010	water tank float	1
3	3811030010	water tank float cover	1
4	3811040010	filter cap	1
5	3811050010	up filter cover	1
6	3811060010	water tank handle	1
7	3811070010	water tank pole	1
8	3811080010	water tank pole spring	1
9	3811090010	water tank pole washer	1
10	3811100010	water tank pole holder	1
11	3811110010	self-tapping screw ST2.9x10	4
12	3811120010	water outlet pipe	1
13	3811130010	water outlet pipe connection board	1
14	3811140010	filter	1
15	3811150010	bead ring	1
16	3811160010	washer	1
17	3811170010	top cover	1
18	3811180010	water tank cap	1
19	3811190010	self-tapping screw ST3.5x12	2
20	3811200010	cover plate	1
21	3811210010	stainless steel cover	1
22	3811220010	self-tapping screw ST2.9x12	2
23	3811230010	top main body	1
24	3811240010	bean box top cover	1
25	3811250010	bean box cover plate	1
26	3811260010	sticking tablets	1
27	3811270010	cover plate	1
28	3811280010	magnet holder	1
A	3811000010	bean grinder assembly	1
70	3811710010	feedback device bracket	1
71	3811720010	self-tapping screw ST2.9x12	2
72	3811730010	ground coffee add feedback device	1
73	3811740010	back cover	1
74	3811750010	self-tapping screw ST3.5x12	25
75	3811760010	self-tapping screw ST2.9x12	4
76	3811770010	right casing	1
77	3811780010	knob	1
78	3811790010	Screw yoke	1
79	3811800010	adjustable powder	1
80	3811810010	adjustable powder base	1
81	3811820010	right bracket	1
82	3811830010	boiler bracket	1
83	3811840010	boiler assembly	1
84	3811870010	pipe plate	1
85	3811880010	nut M6x16	1
86	3811890010	Screw M4x8	2
87	3811900010	pring gasket	2
88	38119770010	temperature sensor	1
89	3811910010	screw M5x8	1
90	3811920010	pring gasket	1
91	3811930010	valve	1
92	3811940010	rubber washer	1
93	3811950010	plastic plunger	1
94	3811960010	washer	1
95	3811970010	spring cap	1
96	3811980010	cone spring	1
97	3811990010	valve cap	1
98	3812000010	One-time protector plate	1
99	38121700010	One-time protector washer	1
100	38121750010	One-time protector	1
101	3812010010	Cushioning pads	1
102	3812020010	Cushioning pads	1
103	3812030010	Chassis limit switch	1
104	3812040010	T-junction	1
105	3812050010	Electromagnetic valve thimble column	1
106	3812060010	Electromagnetic valve thimble rod	1
107	3812070010	electromagnetic valve	1
108	3812080010	right plastic frame sealing plug	1
109	3812090010	wire clip	1
110	3812110010	O-rings	5
111	3812120010	120°connection elbow	1
112	3812130010	Joint circlip boilers	2
113	3812140010	inlet pipe for boiler assembly	1
114	3812150010	Water pump thermal protector	1
115	3812160010	counter	1
116	3812170010	inlet pipe for water pump	1
117	3812180010	water pump base	2
118	3812190010	water pump	1
119	3812200010	water pump washer	1
120	3812210010	water pump check valve	1
121	3812220010	water pump check valve sealing ring	1
8	3812230010	powdered motor assembly	1
140	3812460010	Steam pipe sealing ring	2
141	3812470010	Steam pipe	1
142	3812480010	water pipe seal ring	2
143	3812490010	water pipe	1
144	3812500010	Turbine fixed frame 2	1
145	3812510010	Turbine fixed axle sleeve	1
146	3812520010	turbine	1
147	3812530010	Turbine fixed frame 1	1
148	3812540010	flat gasket	1
149	3812550010	screw M3x12	1
C	3812560010	aeropulverizer assembly	1
193	3813000010	water pipe strap	1
194	3813010010	water tank feedback stents	1
195	3813020010	pressure line	2
196	3813030010	water tank feedback device	1
197	3813040010	plastic frame connecting plate	1
198	3813050010	left the plastic frame	1
199	3813060010	Control panel plastic lining	1
200	3813070010	Line pressing rubber strip	1
201	3813080010	tension disc	1
202	3813780010	transformer bracket	1
203	3813090010	socket	1
204	3813100010	self-tapping screw ST2.9x20	1
205	3813110010	power cord filter	1
206	3814410010	transformer	1
207	3813120010	left cover	1
208	3813130010	top plate	1
209	3813140010	self-tapping screw ST2.6x7.7	4
210	3814330010	Dial the code switch board	1
211	3813150010	Knob decoration box bracket	1
212	3813160010	rubber pipe	1
213	3813170010	fixed block	1
214	3813180010	exports fixed base	1
215	3813190010	exports spring	4
216	3813200010	steel ball	4
217	3813210010	Fixed front cover	1
218	3813220010	screw M3x8	2
219	3813230010	screw M3x12	2
220	3813240010	inif	1
221	3813250010	exports tube	1
222	3813260010	Export catheter base	1
223	3813270010	Export catheter	1
224	3813280010	exports tube bracket	1

225	3813290010	valve	1
226	3813300010	valve washer	1
227	3813310010	valve base	1
228	3813320010	outlet pipe support plate	1
229	3813330010	Knob fixed reed	1
230	3813340010	Plunger valve core	1
231	3813350010	valve core spring	1
232	3813360010	valve core	1
233	3813340010	switch borad	1
234	3813370010	switch	1
235	3813380010	valve magnet	1
236	3813390010	Two-way water body	1
237	3813400010	Two-way aqueduct sealing ring	1
238	3813410010	Two-way aqueduct	2
239	3813420010	steam connecting pipe sealing ring	2
240	3813430010	Water pipe set of head	1
241	3813440010	wire spring	10
242	3813450010	steam connecting pipe	1
243	3813460010	Outlet pipe joint plastic box	1
244	3813470010	Plastic box set of	1
245	3813480010	Two-way water body sealing ring (small)	2
246	3813490010	Two-way water body sealing ring (large)	1
247	3813500010	outlet pipe	1
248	3813510010	restrictor plate	1
249	3813520010	detent ring	1
250	3813530010	titing water outlet	1
251	3813540010	Rubber connecting pipe	1
252	3813550010	bottom water sink	1
253	3813560010	Outlet sleeve ring	2
254	3813570010	Outlet sleeve	1
255	3813580010	Inlet Guide Vane	1
256	3813590010	lamp	2
257	3813600010	waste tank	1
258	3813610010	knob	1
259	3813620010	knob base	1
260	3813630010	function panel	1
261	3813640010	plug cap	1
262	3813650010	Rubber	1
263	3813660010	pack	1
264	3813670010	Rubber main body	1
265	3813680010	water pipe connector	1
266	3813690010	water pipe	1
267	3813700010	stainless steel coat lined	1
268	3813710010	coat	1
269	3813720010	spoon	1
270	3810170001	Load leak basin box	1
271	3813740010	Float stents	1
272	3813730010	floatier	1
273	3810130001	Load leak basin of stents	1
274	3810040001	Take leak basin piece	1
275	3810140001	slag box	1
276	34040008	Door glass decorative parts	1
277	3810250002	lower glass panel	1
278	3810240001	power cord	1
279	3810180001	front frame	1
280	3810260002	sides glass	2
281	3810280001	knob	1
282	3810010002	bottom plate	1
283	3810030002	Right support piece	1
284	3810320010	rocker switch	1
285	3810780010	Holder	1
286	3810210001	Steam pipe fixed frame	1
287	3810220001	handel	1
288	3810120001	top cap	1
289	34039010	Control panel decorative parts	1
290	3810270002	glass panel	1
291	3810020002	left support chip	1
292	3810280001	knob	1
293	3810110001	display PCB board	1
294	3814320010	display PCBA	1
295	3810100001	display PCBA front plate	1
296	3810070001	shunt	1
297	3810080001	shunt cover	1
298	3810090002	shunt plaque	1
299	3810330010	guide rail bracket	2
300	3810150001	right waste tank	1
301	3810050001	right guide rail	1
302	3810160001	left waste tank	1
303	3810060001	left guide rail	1
304	3810300001	Installing support	2

KC545CF Wiring diagram

