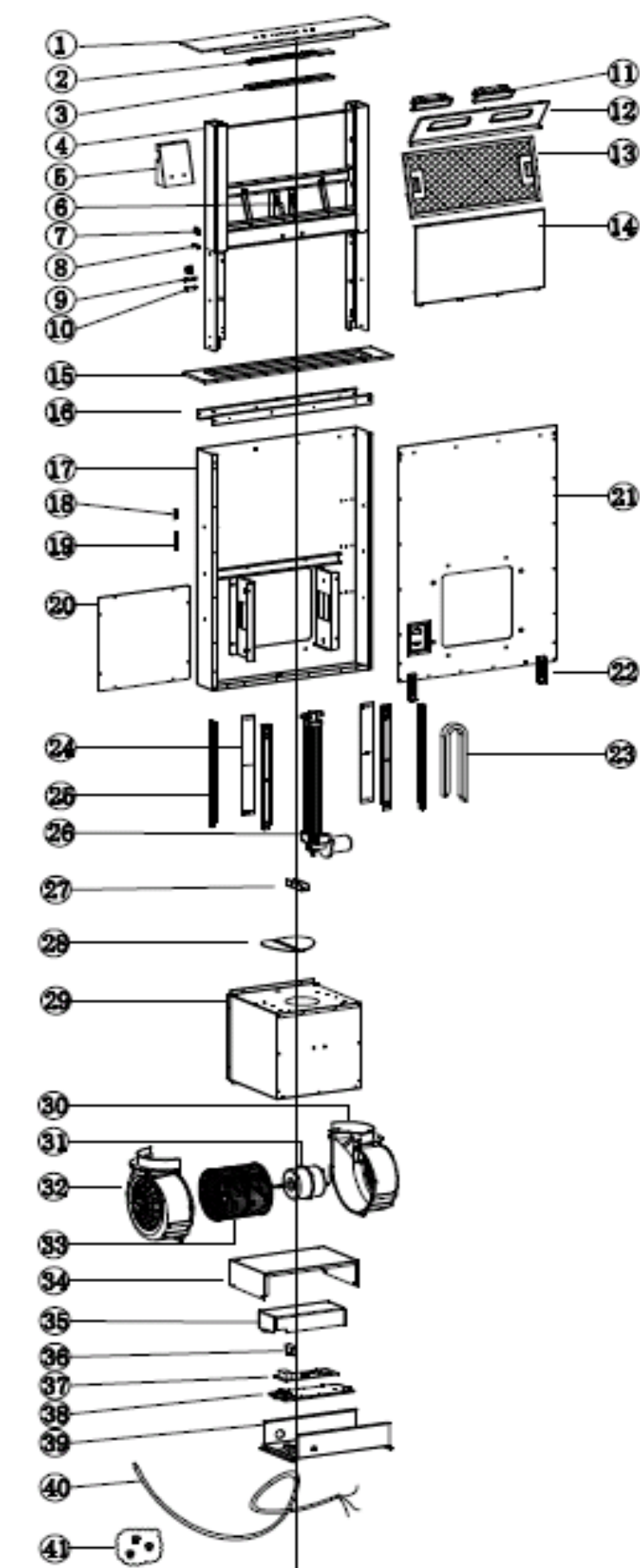


MODEL: CLDHB90



**MODEL: CLDHB90**

| ID Number | Part Number | Part Description                          | Qty |
|-----------|-------------|---|-----|
| 41        | SS28A       | SCREW SET                                 | 1   |
| 40        | CBP3B       | CABLE (WITHOUT PLUG)                      | 1   |
| 39        | EBBSL       | ELECTRIC BOX BOTTOM                       | 1   |
| 38        | EBBISL      | ELECTRIC BOX BOTTOM(INSIDE)               | 1   |
| 37        | P4C9SL      | PCB                                       | 1   |
| 36        | CA4C9SL     | CAPACITOR                                 | 1   |
| 35        | EBCISL      | ELECTRIC BOX COVER(INSIDE)                | 1   |
| 34        | EBCSL       | ELECTRIC BOX COVER                        | 1   |
| 33        | IM28A       | IMPELLER                                  | 1   |
| 32        | LMC28A      | LEFT MOTOR COVER                          | 1   |
| 31        | M4C9SL      | MOTOR                                     | 1   |
| 30        | RMC28A      | RIGHT MOTOR COVER                         | 1   |
| 29        | MH28AC9     | MOTOR HOUSING                             | 1   |
| 28        | V150        | VALVE                                     | 2   |
| 27        | LAFB28A-01  | LINEAR ACTUATOR FIXING<br>BRACKET (DOWN)  | 1   |
| 26        | LA28A       | LINEAR ACTUATOR                           | 1   |
| 25        | GR28A       | GUIDE RAIL                                | 4   |
| 24        | GRF28A      | GUIDE RAIL FIXATION                       | 2   |
| 23        | DC28A       | DRAG CHAIN                                | 1   |
| 22        | FF28A       | FIXING FEET                               | 2   |
| 21        | OC28A       | OUTTER COVER                              | 1   |
| 20        | SBP28A      | SHELL BACK PANEL                          | 1   |
| 19        | SGS28A      | SPRING GUIDE SHAFT                        | 2   |
| 18        | S28A        | SPRING                                    | 2   |
| 17        | CA28A       | CASING                                    | 1   |
| 16        | SCP28A      | SHELL CONNECTION PANEL                    | 2   |
| 15        | FP28A       | FRONT PANEL                               | 1   |
| 14        | DP28A       | DOOR PANEL                                | 1   |
| 13        | AF28A       | ALUMINUM FILTER                           | 1   |
| 12        | LP28A       | LAMP PANEL                                | 1   |
| 11        | KL12        | LED 1W                                    | 2   |
| 10        | MSC28A      | MICRO SWITCH CLAMP                        | 1   |
| 9         | MSB28A      | MICRO SWITCH BRACKET                      | 1   |
| 8         | MSF28A      | MICRO SWITCH FIXATION                     | 1   |
| 7         | MS28A       | MICRO SWITCH                              | 2   |
| 6         | LAFB28A -02 | LINEAR ACTUATOR FIXING<br>BRACKET (UPPER) | 1   |
| 5         | LAC28A      | LINEAR ACTUATOR COVER                     | 1   |
| 4         | PP28A       | POSITIONING PLATE                         | 1   |
| 3         | PBC033      | SWITCH BOX COVER                          | 1   |
| 2         | AYD033      | SLIDE TOUCH SWITCH                        | 1   |
| 1         | SP28A       | CONTROL PANEL                             | 1   |