



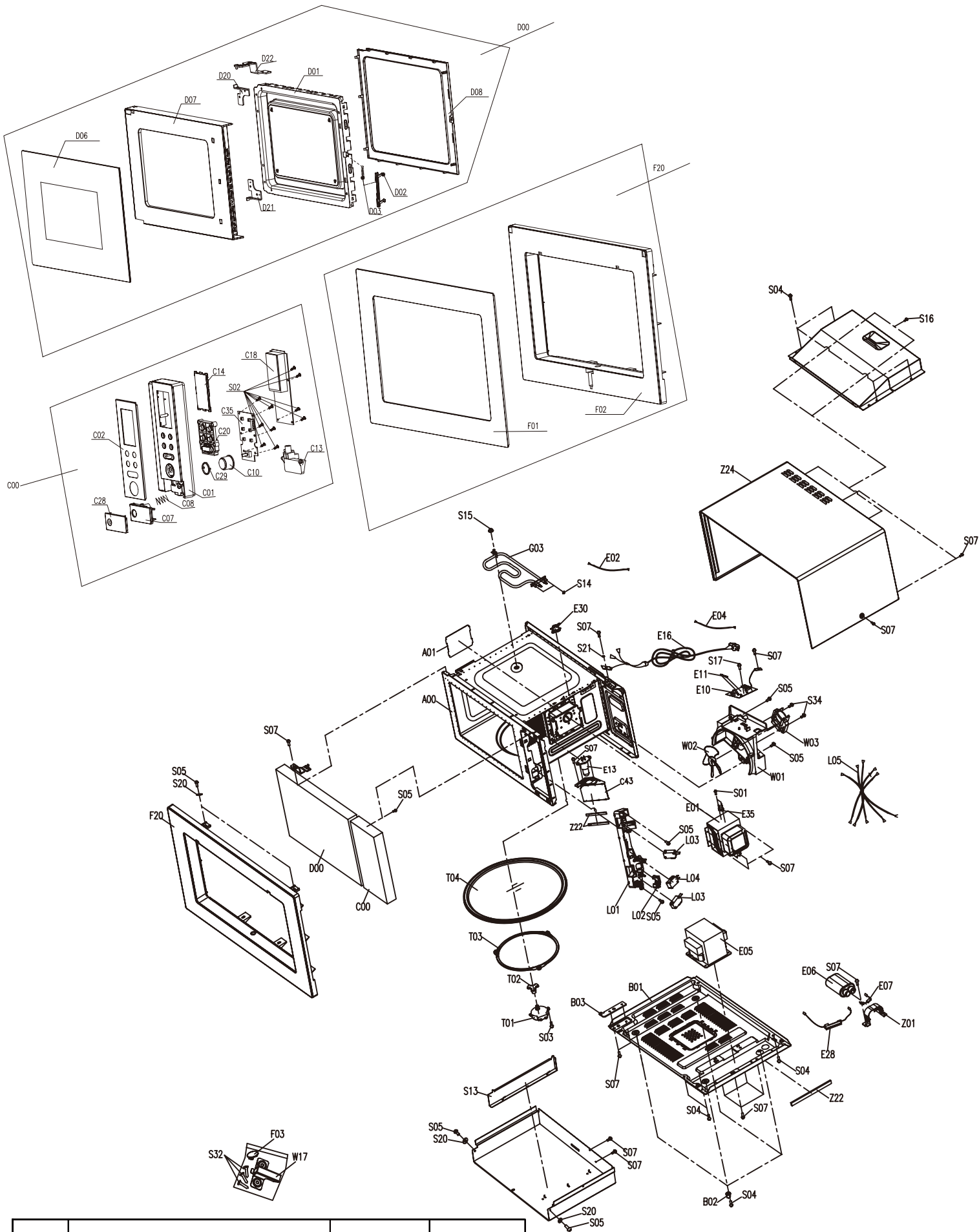
Microwave:BM17LBS

Version:00

Date:2016-09-17

Product reference code:BM17LBS

BM17LBS Exploded drawing

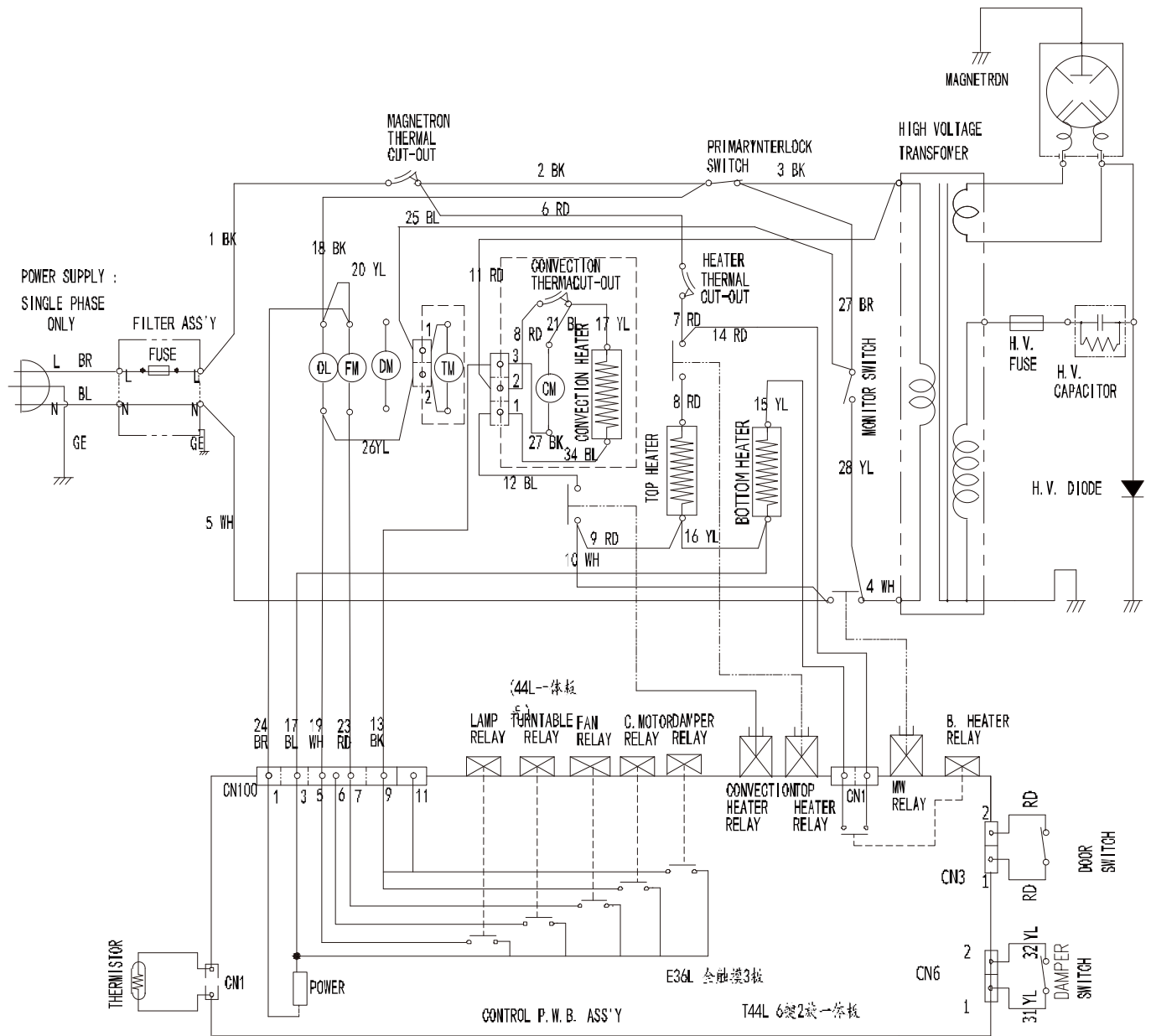


00	New document	Eason	2016.09.20
Index	Modify description	Modified by	Date

BM17LBS parts list

No.	Ref no.	Midea Part No.	Part Name	Qty
L01	261301301702	12170000003369	LATCH BOARD	1
L02	261301101000	12170000007318	INTERLOCK LEVER	1
L05	251202800491	17470000001161	MAIN WIRE HARNESS	1
L03	261201600340	17470000002318	MICROSWITCH INTERLOCK	2
L04	261201600320	17470000002306	MICROSWITCH MONITOR	1
W02	251300900015	12170000000210	FAN	1
W01	251300802900	12170000004287	FAN GUIDE	1
W03	251200600161	11002017000075	FAN MOTOR	1
T02	252200100008	12170000000424	COUPLER	1
Z22	252200700003	12670000000424	Wind shield sponge	1
T03	262200200023	12170000004334	ASS'Y RING ROTATING	1
W09	261503204300	12270000000152	WIND GUIDE COVER *LOWER	1
D00	69411220	12270000A52728+ 12570000000460	ASS'Y DOOR	1
D05	262200400028	12170000009488	DOOR FILM	1
D01	261500203301	12270000003813	ASS'Y DOOR FRAME	1
D07	261300133201	12170000006067	DOOR PANEL	1
D03	252010000000	12970000000365	LATCH SPRING	1
D04	261502401100	12270000006123	ASS'Y HINGE *UPPER	1
D08	261300602200	12170000009535	DOOR GASKET	1
D02	261300501100	12170000003861	LATCH	1
A01	252100100016	12570000001036	SPLASH COVER	1
Z24	261502632200	12270000005630	OUTER CASE	1
T04	252100500496	12570000001019	GLASS TRAY	1
W17	261514200200	12270000003554	MOUNTING PLATE	1
W08	261503204100	12270000000151	WIND GUIDE COVER *UPPER	1
A00	261500118400	12270000004690	ASS'Y CAVITY	1
E13+W04	263602100989	17470000000757	ASS'Y LAMP	1
W04/C43	261503202100	12270000000175	LAMP COVER	1
E13	263600500006	17470000000636	LAMP	1
C00	25105195	17270000A56272	ASS'Y C/PANEL	1
C08	252010100001	12970000000400	BUTTON SPRING	2
C01	261300251200	12170000002624	CONTROL PANEL	1
C07	261306011500	12170000006787	DOOR OPEN BUTTON	1
C18	261400127550	17170000000879	ASS'Y PCB	1
C29/C44	261312402900	12170000008754	KNOB COVER	1
C10	261301604002	12170000009167	DIAL KNOB	1
C35	261400600056	17170000004738	SUB PCB	1
C13	261306100301	12170000010328	DOOR OPEN LEVER	1
C20	261301915801	12170000008209	BUTTON ROW	1
C28	261516904100	12270000000623	DOOR OPEN BUTTON DECO.	1
C14	261304907100	12170000007480	DISPLAY WINDOW	1
C02	261506915820	12270000A01194	DECO. C/PANEL	1
E06	251200701308	17470000000694	H.V.CAPACITOR	1
E28	251203301549	17470000001559	H.V.FUSE	1
E07	251200900861	17470000001006	H.V.DIODE	1
B01	261501411505	12270000005102	BASE PLATE	1
Z01	261501500300	12270000006211	H.V.C HOLDER	1
B02	251302000013	12170000000179	FOOT	4
B03	261502501000	12270000006126	HINGE *LOWER	1
E29	251201300036	17470000001495	THERMOSTAT 70/59℃ *H	1
E35	251201300916	17470000001509	THERMOSTAT 160℃/95℃ *V	1
E02	251202701048	17470000002341	THERMOSTAT_滤波板连接线	1
E01	251200100068	17470000000809	MAGNETRON	1
T01	251200300001	11002014000037	TURNTABLE MOTOR	1
F03	261314300300	12170000007372	SCREW COVER	1
F02	261314200900	12170000006666	TRIM PANEL	1
E16	261201002680	17470000000120	POWER CORD	1
E05	251200200298	17470000003624	H.V.TRANSFORMER	1
G03	251201700130	17470000001071	METAL HEATER *UPPER	1
F01	261518904103	12270000A00739	TRIM DECO.	1
D06	262100401761	12570000000460	DOOR SCREEN	1
E10+E11	263601600011	17170000002913	ASS'Y NOISE FILTER	1

BM17LBS Wiring diagram



NOTE :

- OL : OVEN LAMP
- FM : FAN MOTOR
- CM : CONVECTION FAN MOTOR

- TM : TRAY MOTOR
- DM : DAMPER MOTOR

线行颜色定义:

- BK 黑色
- BR 棕色
- WH 白色
- BL 蓝色
- YL 黄色
- RD 红色
- GR 灰色
- GE 黄/绿夹杂色
- GN 绿色

Relay颜色定义

- 微波Relay 白色
- 上小烧烤Relay 红色
- 上大烧烤Relay 黄色
- 下烧烤Relay 黑色
- 热风Relay 蓝色