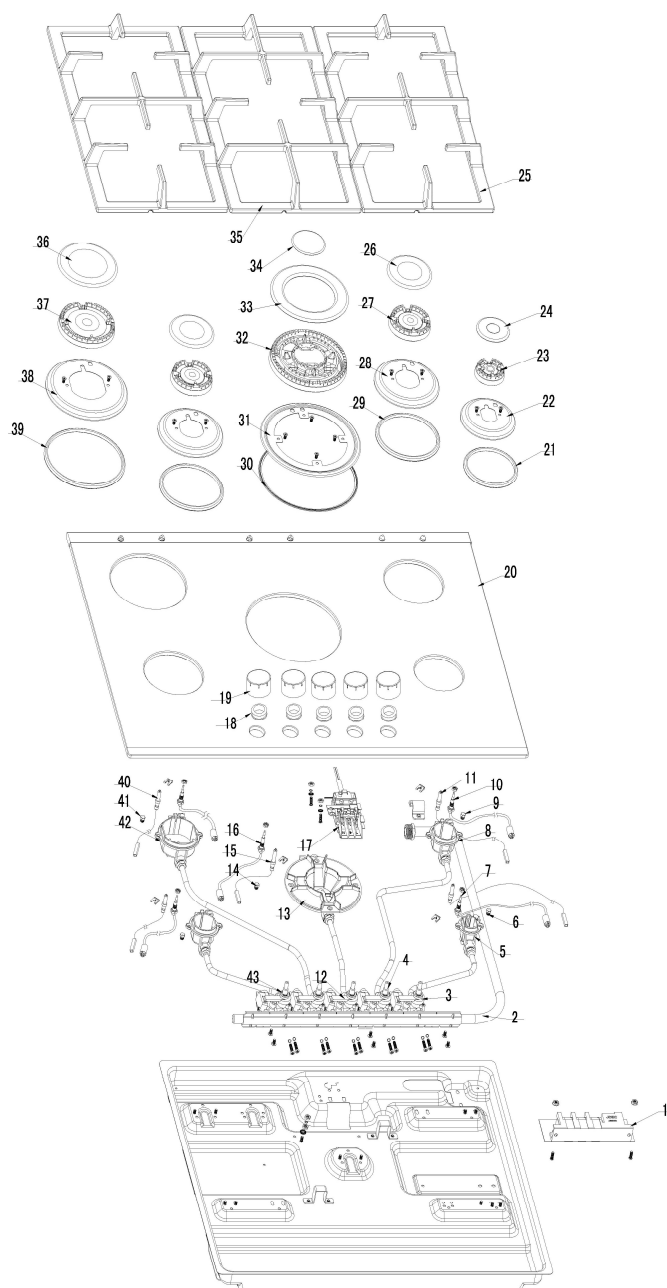


gas hob:CLGH70BK_CLGH5BK-CF

Version: 01

Date: 2014-03-12

CLGH70BK_CLGH5BK-CF Exploded drawing



01	Change the code of No.13,14 and 32~34,	Paul	2014-3-12
00	New document	Paul	2014-3-5
Index	Modify description	Modified by	Date

CLGH70BK_CLGH5BK-CF parts list

No.	Part code	Part description	Quantity
43	26200030	100# valve 3	1
42	64500030	100# burner basement	1
41	69401805	100# NG nozzle	1
	69403105	100# LPG nozzle	1
40	69409980	ignition pin (570)	2
39	60500260	100# sealing ring	1
38	69406000	100# waterproof tray	1
37	69400100	100# burner	1
36	69401730	100# burner cap	1
35	69410445	pan support (middle)	1
34	69410470	120# burner cap (internal)	1
33	69410465	120# burner cap (external)	1
32	69410460	120# burner	1
31	69406010	120# waterproof tray	1
30	60500270	120# sealing ring	1
29	60500025	70# sealing ring	2
28	69406005	70# waterproof tray	2
27	69400125	70# burner	2
26	69401740	70# burner cap	2
25	69410440	cast iron pan support (side)	2
24	69401745	50# burner cap	1
23	69400060	50# burner	1
22	69406015	50# waterproof tray	1
21	60500040	50# sealing ring	1
20	69410435	glass panel	1
19	60701740	knob	5
18	60500250	sealing ring for knob	5
17	26200175	electric box	1
16	26200340	516 thermocouple (350)	1
15	69401775	ignition pin (360)	1
14	69410455	120# NG nozzle (1.31, 3kw)	1
	69410450	120# LPG nozzle (0.86, 3kw)	1
13	64501080	120# burner basement	1
12	26200035	120# valve 4	1
11	69400180	ignition pin (370)	1
10	26200050	528C thermocouple (500)	2
9	69401790	70# NG nozzle	2
	69403090	70# LPG nozzle	2
8	64500025	70# burner basement	2
7	26200190	528C thermocouple (350)	2
6	69401795	50# NG nozzle	1
	69403100	50# LPG nozzle	1
5	64500035	50# burner basement	1
4	26200105	70# valve 2	2
3	26200090	50# valve 1	1
2	26201110	gas inlet tube	1
1	26200180	impulse device	1

CLGH70BK_CLGH5BK-CF Wiring diagram

