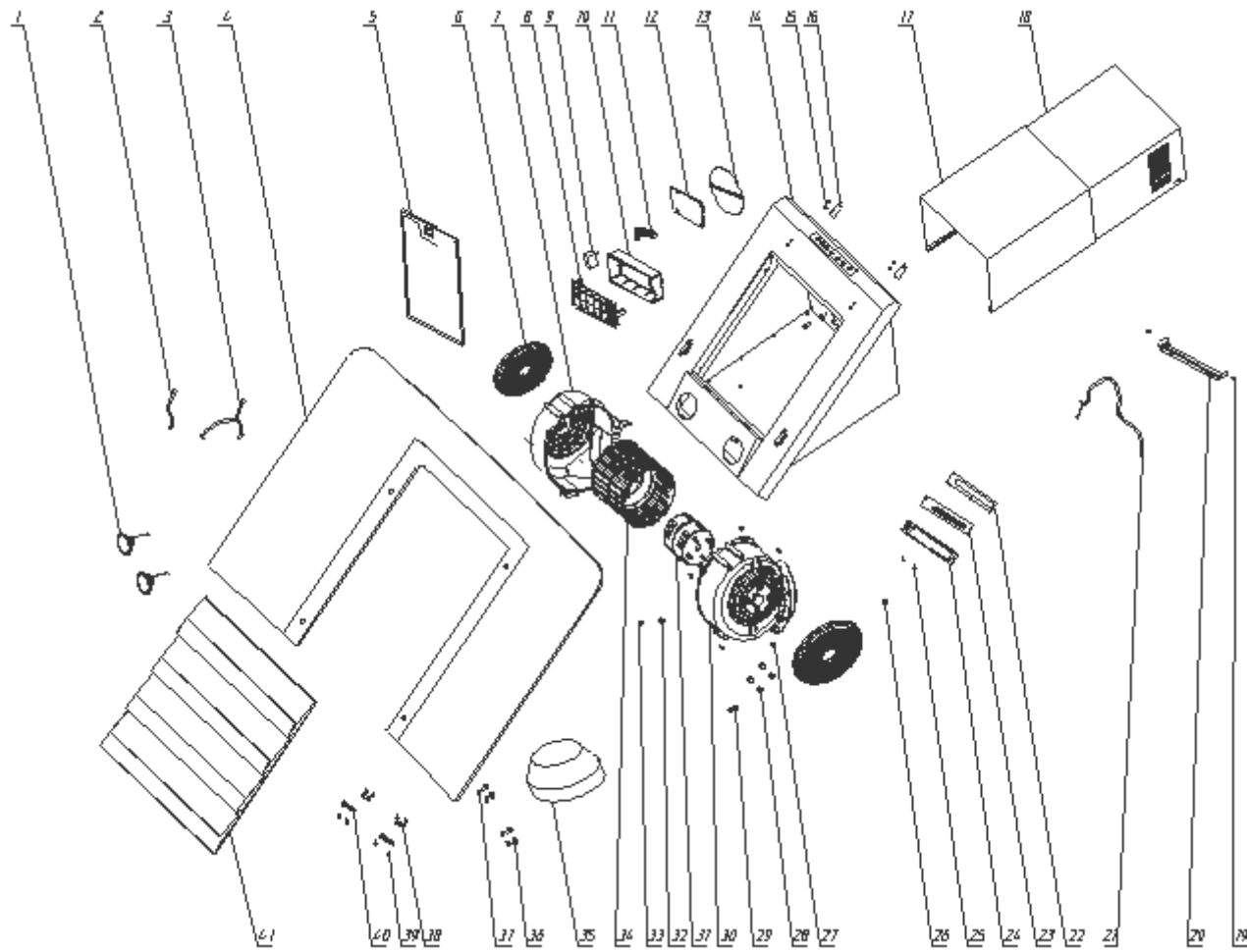


90cm Stainless Steel Angled Glass Cooker Hood

Model Number UBCURSS90

Parts Manual

Exploded Drawing



02			
01			
00			
Index	Modify description	Modified by	Date

Parts List

S/N	Ref.	Description	QTY	REMARK
41	7005010010	FRONT PANEL ASSEMBLY	1	
40	7111105051	LOWER DOOK LOCK BEAD	2	
39	9111290802	SCREW ST2.9*8	8	
38	7111105041	DOOR LOCK BEAD	2	
37	503130005	HANDLE PAD	4	
36	9112502001	GLAZING SPRING M5	4	
35	7121105350	OUTLET TUBE REDUCER 150 TO 120MM	1	
34	7121503030	CN BLADE WHEEL	1	
33	502010038	FILLER	1	
32	9132050002	NUT M5	1	
31	7131080020	MOTOR	1	
30	7121103010	RIGHT SHELL OF WIND CABINET	1	
29	7121503080	WIRE GROOVE 2	1	
28	9131050002	LOCKING NUT M5	4	
27	9111351201	SCREW 3.5*12	13	
26	7121104130	PROTECTION WIRE COVER	1	
25	16000009	SCREW M4*9	2	
24	7121106003	TOUCH CONTROL BOX	1	
23	7134050001	CONTROL PCB	1	
22	7121106004	COVER - TOUCH CONTROL BOX	1	
21	7136001707	POWER CORD WITHOUT PLUG	1	
20	7112106081	BRACKET - CHIMNEY	1	
19	16000009	TRILOBULAR THREAD SCREWS M4*9	2	
18	7117105231	CHIMNEY - INNER	1	
17	7117105221	CHIMNEY - OUTER	1	
16	7117105501	HINGE	2	
15	16000009	SCREW M4*9	4	
14	7005010011	BOX ASSEMBLY - WHITE	1	
13	7121503060	RETURN VALVE	2	
12	7134050003	POWER PCB	1	
11	7121105330	WIRE GROOVE 4	1	
10	7121105050	COVER - POWER SUPPLY BOX	1	
9	7132030030	CAPACITANCE	1	
8	7121105040	POWER SUPPLY BOX	1	
7	7121103020	LEFT SHELL OF WIND CABINET	1	

6	7003080100	CHARCOAL FILTER	2	Optional
5	7001060100	ALUMINIUM FILTER	1	
4	7151050042	LARGE GLASS	1	
3	7137100033	WIRING - LAMP	1	
2	7137100057	WIRE 850 - TOUCH SWITCH	1	
1	7135050003	LED LAMP	2	