



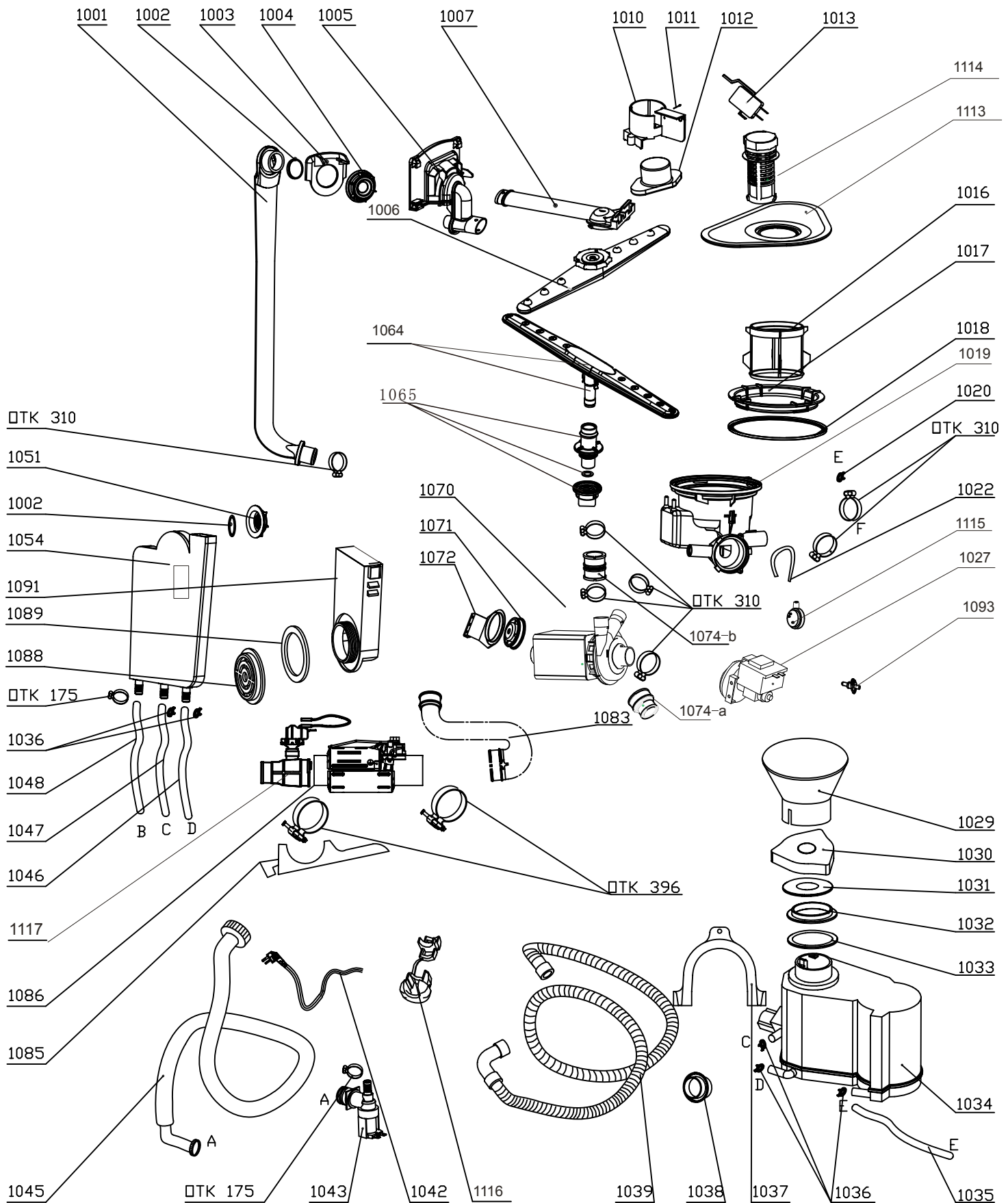
Dishwasher:UBFSDW60SV

Version:00

Date:2014-09-24

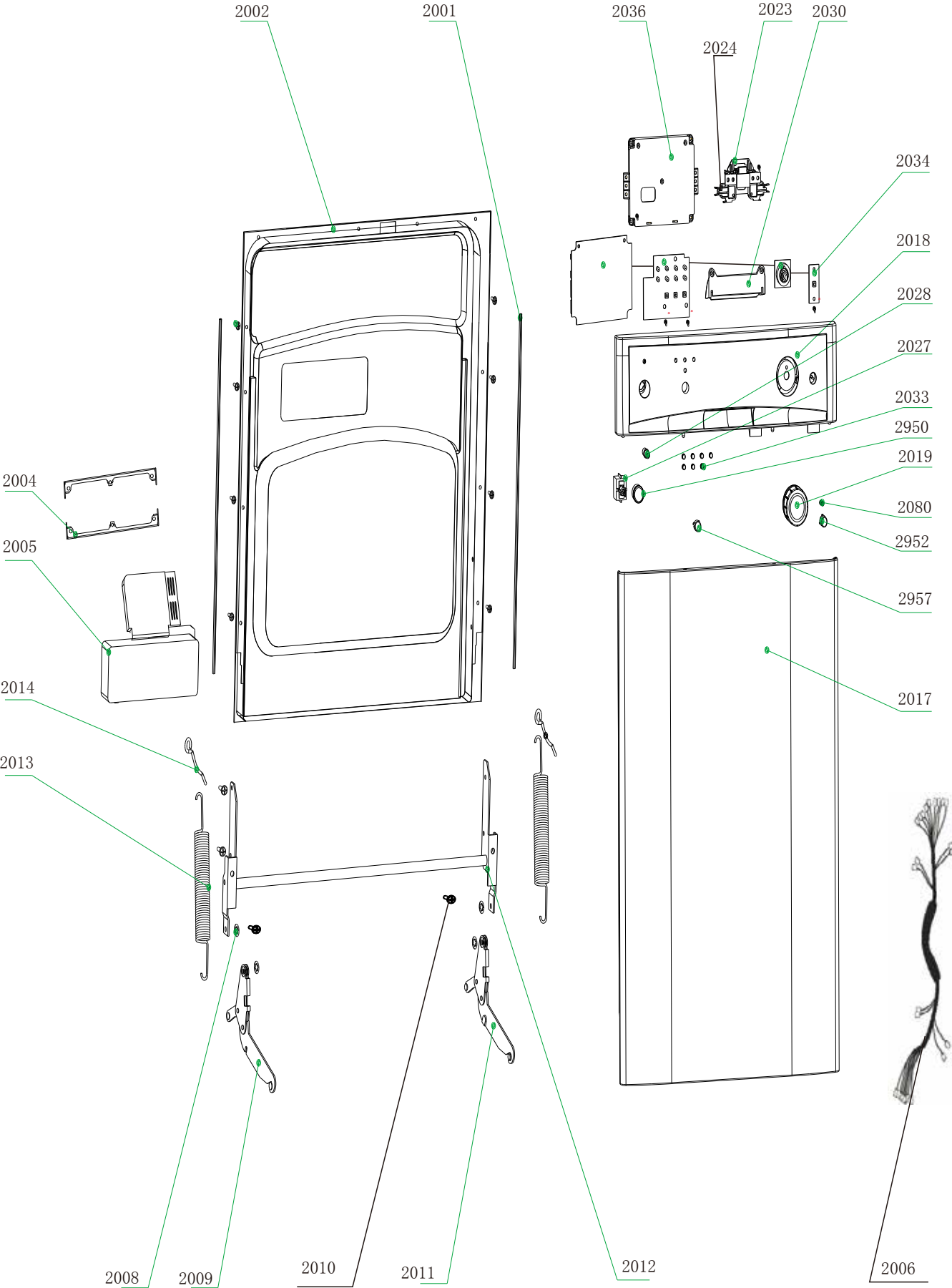
Product reference code: UBFSDW60SV

# UBFSDW60SV Exploded drawing(1)

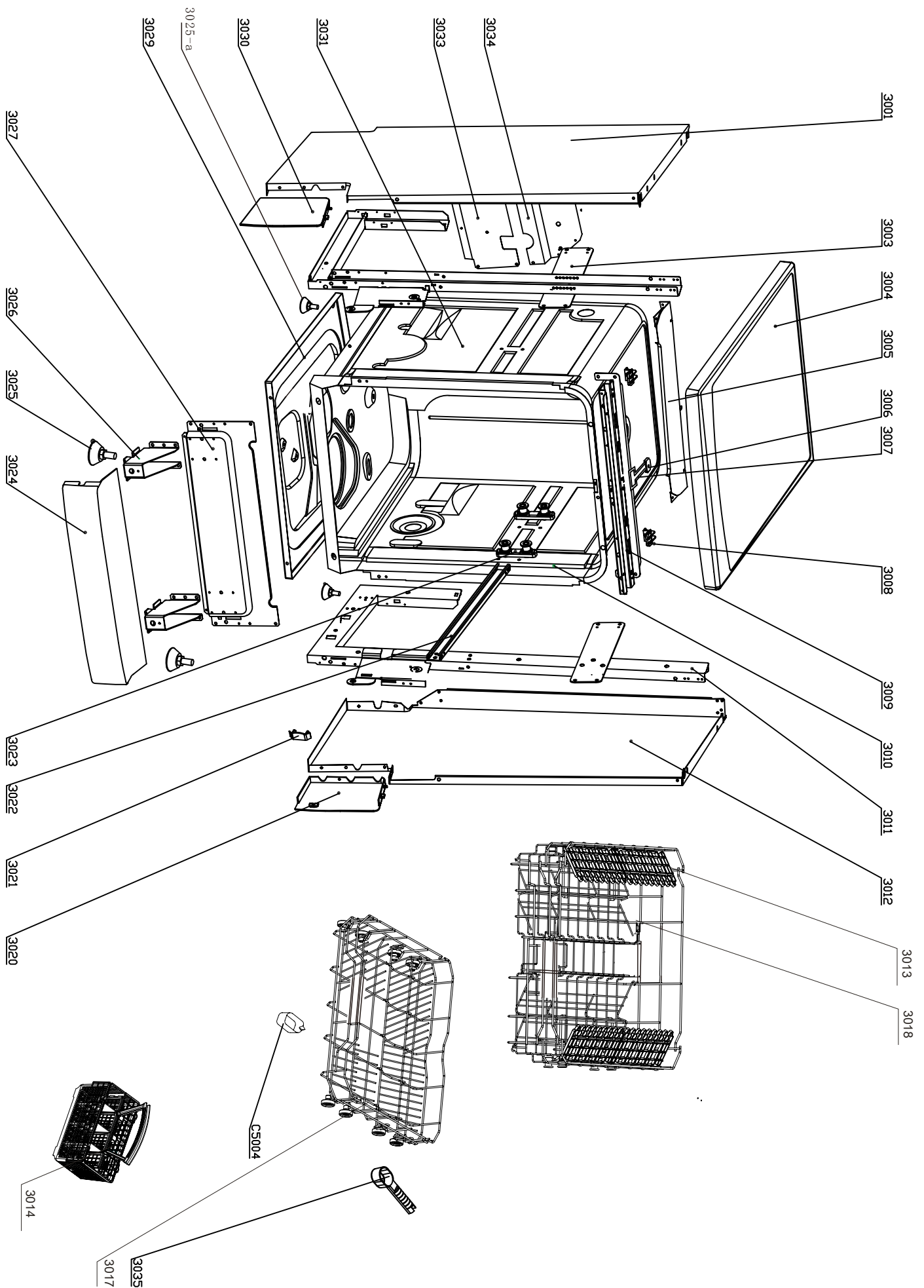


|       |                    |             |             |
|-------|--------------------|-------------|-------------|
|       |                    |             |             |
|       |                    |             |             |
| 00    | New document       | Eason       | 2014. 9. 24 |
| Index | Modify description | Modified by | Date        |

# UBFSDW60SV Exploded drawing(2)



# UBFSDW60SV Exploded drawing(3)



# UBFSDW60SV parts list(1)

| NO.  | Part code    | part name                                     | QTY |
|------|--------------|---|-----|
| 1001 | 673000900223 | External pipe                                 | 1   |
| 1002 | 673001500005 | O Ring I 31.5X3.55                            | 3   |
| 1003 | 673001800364 | Guide casing                                  | 1   |
| 1004 | 673001600021 | External pipe nut                             | 1   |
| 1005 | 673001900038 | Water dispenser                               | 1   |
| 1006 | 673000310006 | Upper sprayer                                 | 1   |
| 1007 | 673000900195 | Upper sprayer pipe                            | 1   |
| 1012 | 673002300003 | Float   | 1   |
| 1016 | 673002500072 | Micro filter                                  | 1   |
| 1017 | 673001600022 | Sump nut                                      | 1   |
| 1018 | 673001500122 | Sump gasket                                   | 1   |
| 1019 | 673000700081 | Sump  | 1   |
| 1020 | 672000700028 | Clamp 12.7×1.8                                | 2   |
| 1022 | 673000900073 | PVC hose                                      | 1   |
| 1027 | 674000600106 | Drain pump                                    | 1   |
| 1029 | 673002200043 | Salt filler                                   | 1   |
| 1030 | 673002800050 | Softener cover assembly                       | 1   |
| 1031 | 673001700080 | Softener cover gasket                         | 1   |
| 1032 | 673001600039 | Softener nut                                  | 1   |
| 1033 | 673001700001 | Softener gasket                               | 1   |
| 1034 | 674000700020 | Softener                                      | 1   |
| 1036 | 672000700029 | Clamp 14.5×1.8                                | 3   |
| 1037 | 673006200027 | Drain hose hook                               | 1   |
| 1038 | 673001500002 | Drain hose holder                             | 1   |
| 1039 | 673000900251 | Drain hose                                    | 1   |
| 1042 | 674000000194 | Power cord                                    | 1   |
| 1043 | 674000200002 | Inlet valve                                   | 1   |
| 1045 | 673000900205 | Inlet hose assembly                           | 1   |
| 1046 | 673000900233 | Regeneration hose                             | 1   |
| 1048 | 673000900237 | Inlet hose of air breather                    | 1   |
| 1051 | 673001600025 | Ring nut air breather                         | 1   |
| 1054 | 673002700607 | Air breather assembly                         | 1   |
| 1064 | 670400051614 | Lower sprayer                                 | 1   |
| 1065 | 673001200027 | Lower sprayer connection assembly             | 1   |
| 1070 | 674005600080 | Washing pump                                  | 1   |
| 1083 | 673000900045 | Bend connect hose                             | 1   |
| 1085 | 673001400025 | Heating element support                       | 1   |
| 1086 | 674001100044 | Heating elements                              | 1   |
| 1088 | 673001600024 | Water inlet nut                               | 1   |
| 1089 | 673001500019 | Water inlet gasket                            | 1   |
| 1091 | 673002600063 | Water inlet                                   | 1   |
| 1093 | 674000900053 | Sensing device                                | 1   |
| 1113 | 672000600021 | plane filter                                  | 1   |
| 1114 | 673001300179 | Scran collection                              | 1   |
| 1115 | 674000302020 | Pressure switch                               | 1   |
| 1116 | 673001400083 | power cord clasper                            | 1   |
| 1117 | 674000302006 | pressure switch assembly for heating elements | 1   |
| 2001 | 673002000098 | Door edge guard piece                         | 2   |
| 2002 | 672002200338 | Inner door                                    | 1   |
| 2004 | 672001700002 | Dispenser bracket                             | 2   |
| 2005 | 674000800058 | Dispenser                                     | 1   |
| 2006 | 674000102027 | Wiring harness                                | 1   |
| 2008 | 672000500006 | Ring Φ6                                       | 4   |
| 2009 | 672001300029 | Left hinge                                    | 1   |

# UBFSDW60SV parts list(2)

|                |              |                         |   |
|----------------|--------------|-------------------------|---|
| 2010           | 672001200012 | Joint pin               | 2 |
| 2011           | 672001300030 | Right hinge             | 1 |
| 2012           | 672001300024 | Door gemel assembly     | 1 |
| 2013           | 672000100000 | Door spring             | 2 |
| 2014           | 672001100001 | Door spring bolt        | 2 |
| 2017           | 672001800442 | Outer door              | 1 |
| 2018           | 673000405908 | Control panel           | 1 |
| 2019           | 673000804015 | Knob                    | 1 |
| 2023           | 674000301017 | Handle assembly         | 1 |
| 2024           | 674010030000 | Micro switch            | 1 |
| 2027           | 674000300065 | Power switch            | 1 |
| 2028           | 674000400011 | Red pilot               | 1 |
| 2030           | 673001890135 | Handle cover            | 1 |
| 2033           | 673000900003 | Indicator cover         | 4 |
| 2034           | 674001001212 | Control board           | 1 |
| 2036           | 673002400190 | Control board box       | 1 |
| 2080           | 672000100012 | button spring           | 1 |
| 2950           | 673000801440 | Power button            | 1 |
| 2952           | 673000801441 | start button            | 1 |
| 2957           | 673000801983 | half load button        | 1 |
| 3001           | 672001600239 | Left side panel         | 1 |
| 3003           | 672002190013 | Left uprights           | 1 |
| 3004           | 673000200361 | Ceiling board           | 1 |
| 3005           | 672001500008 | Upper rear crosspiece   | 1 |
| 3006           | 673001300634 | door clamp              | 1 |
| 3007           | 672001400039 | Door lock               | 1 |
| 3008           | 673001300003 | Top clamp block         | 2 |
| 3009           | 672001500150 | Upper front crosspiece  | 1 |
| 3010           | 673001700079 | Tank gasket             | 1 |
| 3011           | 672002190014 | Upright right assembly  | 1 |
| 3012           | 672001600240 | Right panel             | 1 |
| 3013           | 673001300102 | Upper basket cup holder | 4 |
| 3014           | 673003200077 | Cutlery basket assembly | 1 |
| 3017           | 672000803080 | Lower basket            | 1 |
| 3018           | 672000800345 | Upper basket            | 1 |
| 3020           | 673001100148 | Right washboard         | 1 |
| 3021           | 673001300181 | Rail block              | 2 |
| 3022           | 672001701000 | Rail                    | 2 |
| 3023           | 673001401025 | Rail support assembly   | 4 |
| 3024           | 673001100149 | Baseboard               | 1 |
| 3025           | 673001100156 | Adjustable foot         | 2 |
| 3026           | 672000200058 | Foot rest               | 2 |
| 3027           | 672001503004 | Lower front crosspiece  | 1 |
| 3029           | 672002000044 | Tray assembly           | 1 |
| 3030           | 673001100147 | Left side baseboard     | 1 |
| 3031           | 672001902285 | Tank                    | 1 |
| 3033           | 672001500202 | Lower rear crosspiece   | 1 |
| 3034           | 672001500007 | Middle rear crosspiece  | 1 |
| 3035           | 673002200079 | Measurable spoon        | 1 |
| 1010+1011+1013 | 673001490016 | Float holder assembly   | 1 |
| 1035+1047      | 673000900224 | Flexible hose           | 2 |
| 1071+1072      | 672000200054 | Washing motor support   | 1 |
| 1074-a         | 673000900228 | Connect hose a          | 1 |
| 1074-b         | 673000900229 | Connect hose b          | 1 |
| 3025-a         | 673001100180 | Adjustable foot a       | 2 |
| C5004          | 673006200004 | rinsing agent cup       | 1 |
| OTK 175        | 672000700004 | OTK 175                 | 2 |
| OTK 310        | 672000700001 | OTK 310                 | 7 |
| OTK 396        | 672000700007 | OTK 396                 | 2 |