



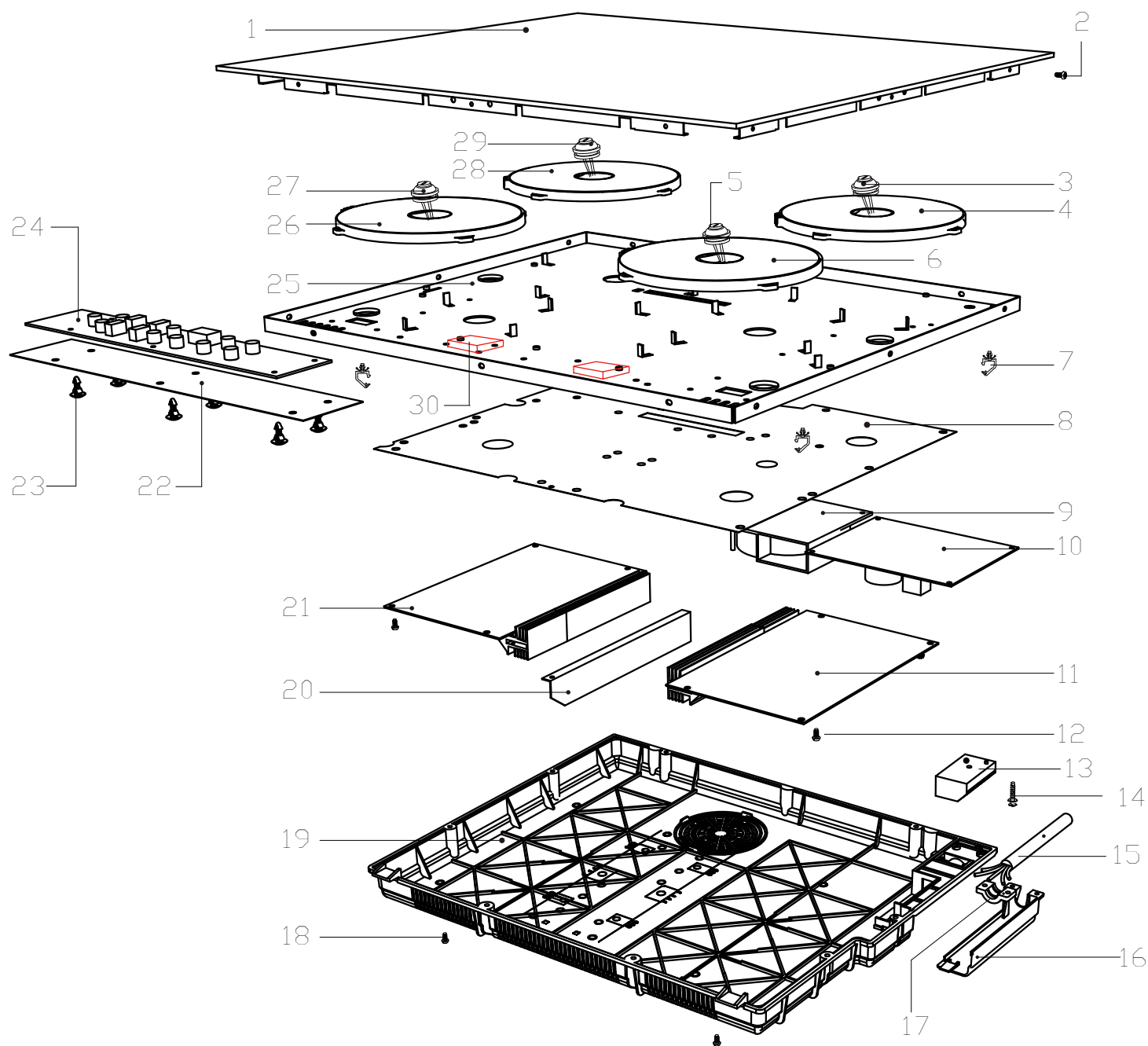
Induction Hob:CLIND2BK-C

Version:00

Date:2014-10-31

Product reference code: 29576074

CLIND2BK-C Exploded drawing



No.	CODE	Q'ty	COLOR	
40	303206800036	2	RED/450mm	
41	303206800041	2	RED/150mm	
42	303206800159	2	RED	
43	303206800157	2	BLUE	
44	303206800158	1	YELLOW/GREEN	

00	New document	Eason	2014. 10. 31
Index	Modify description	Modified by	Date

CLIND2BK-C parts list

No.	Parts code	Parts names	QTY
1	NEW+542300000060	glass assembly	1
2	301500101374	Screw	12
3	541600200011	the ceramic plate temperature sensor	1
4	542200000009	180 Coil groupware	1
5	541600200011	the ceramic plate temperature sensor	1
6	542200000009	180 Coil groupware	1
7	303207300212	line clamp	4
8	541700500008	isinglass flake B	1
9	303208003019	Fan	1
10	541500200005	accessorial power	1
11	303203101364	Power board	1
12	301500101197	Screw	6
13	541810000002	junction port holder	1
14	301500101200	Screw+gasket	1
15	541800000001	Power Cord	1
16 /17	541300600011	power cord case cover	1
18	301500100954	Screw	10
19	541300100005	Base	1
20	303207300215	windshield insulating flake	1
21	303203101364	Power board	1
22	541700300019	isinglass flake A	1
23	303207300211	knighthead	3
24	303203101374	Display board	1
25	541400300022	radiator board	1
26	542200000009	180 Coil groupware	1
27	541600200011	the ceramic plate temperature sensor	1
28	542200000009	180 Coil groupware	1
29	541600200010	the ceramic plate temperature sensor	1
30	541700700002	Supporting Foam	2

CLIND2BK-C Wiring diagram

