

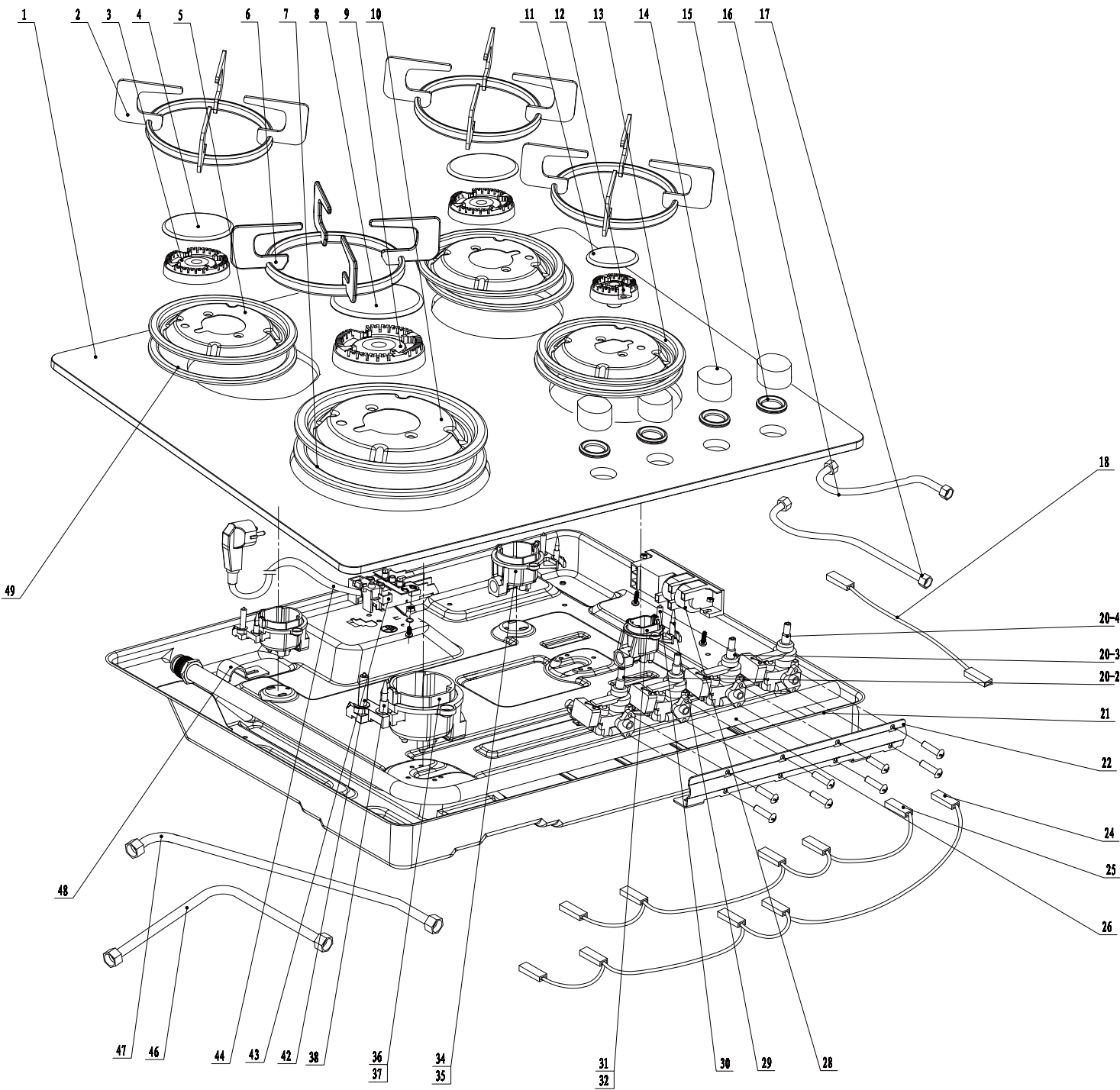
Gas Hob:TPGG60

Version:00

Date:2015-08-05

Product reference code:TPGG60B

TPGG60 Exploded drawing



00	New document	Eason	2015. 8. 5
Index	Modify description	Modified by	Date

TPGG60 parts list

No.	Part Code	Part name English	Qty
1	12566200000116	glass top panel	1
2	12366200000472	pan support components	3
3	12971100001461	sprayer #3	2
4	12971100001431	burner cap #3	2
5	12266200000719	drip tray #3	2
6	12366200000471	pan support components	1
7	12666200000038	drip tray waterproof rubber gasket	1
8	12971100001437	burner cap #2	1
9	12971100001459	sprayer #2	1
10	12266200000734	drip tray #2	1
11	12971100001427	burner cap #4	1
12	12971100001457	sprayer #4	1
13	12266200000729	drip tray #4	1
14	12166200000035	knob components	4
15	12666200000034	knob waterproof rubber ring	4
16	12966200000225	aluminum gas tube (right front)	1
17	12966200000226	aluminum gas tube (right rear)	1
18	17466200000023	connection wire	1
20-2	12366200000208	valve components 2#	1
20-3	12366200000202	valve components 3#	2
20-4	12366200000201	valve components 4#	1
21	12266200000216	bottom plate	1
22	12266200000578	valve bracket	1
24	17466200000024	wire of Micro Switch	1
25	17466200000022	wire of Micro Switch	1
26	12966200000035	inlet pipe components	1
28	17471100000197	plus ignition	1
29	12966200000320	Thermocouple components	2
30	12971100001239	ignition needle components	2
31	12971100001295	burner cup #4	1
32	12971100001548	injector #4 (G20)	1
34	12971100001285	burner cup #3	2
35	12971100001468	injector #3 (G20)	2
36	12971100001284	burner cup #2	1
37	12971100001510	injector #2 (G20)	1
38	12966200000319	Thermocouple components	2
42	12971100001261	ignition needle components	2
43	12166200000091	terminal box	1
44	17466200000040	power cord	1
46	12966200000236	aluminum gas tube (left front)	1
47	12966200000224	aluminum gas tube (left rear)	1
48	12266200000617	pipe clamp	1
49	12666200000049	drip tray waterproof rubber gasket	1
Fitting	12971100001514	injector #4 (G30)	1
	12971100001499	injector #3 (G30)	2
	12971100001511	injector #2 (G30)	1