



Gas Hob:UBGHC901S

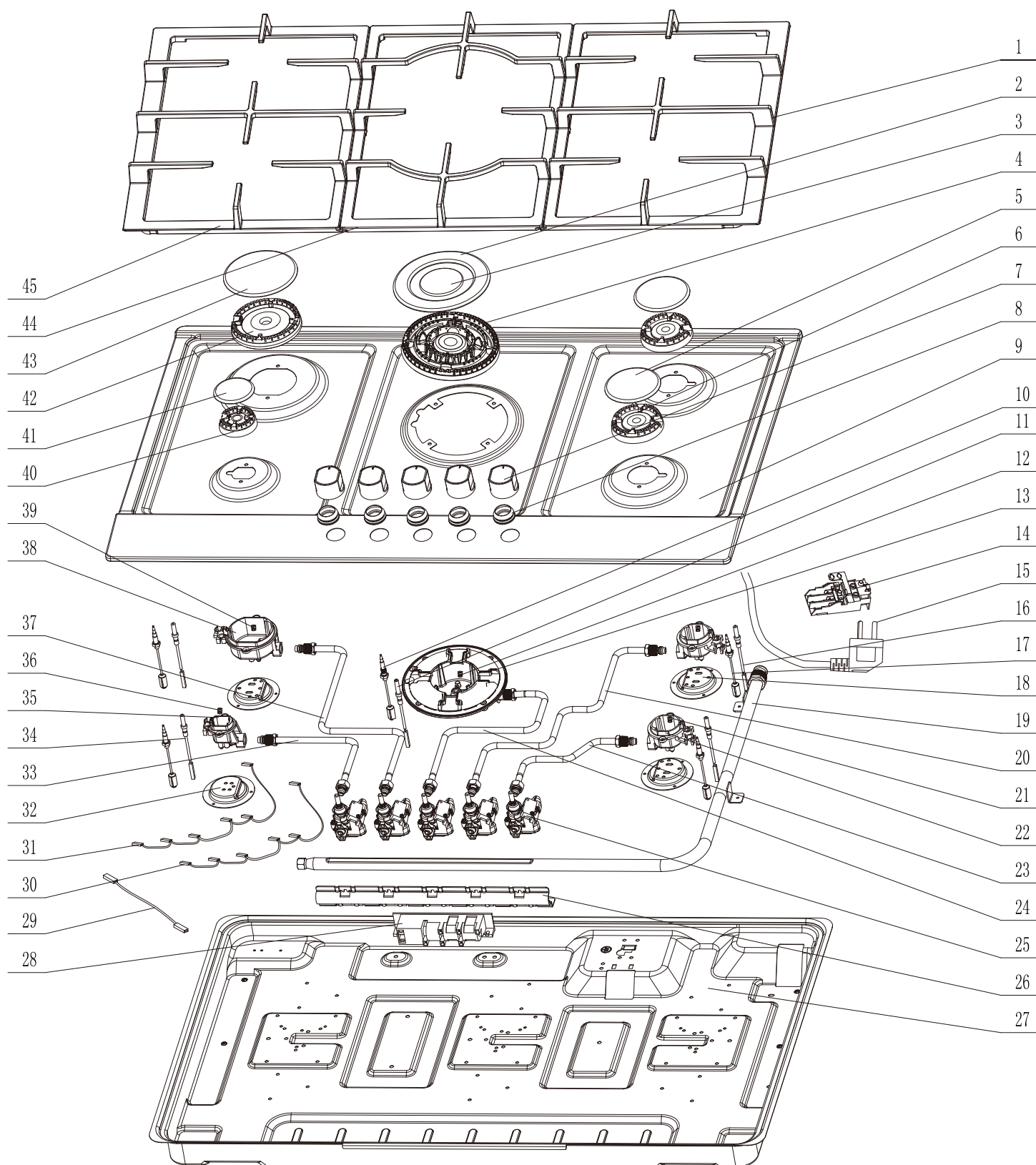
Product reference code:UBGH901S

Modified by:Eason

Modification:

00_2018.01.22 New document

UBGHC901S Exploded drawing



UBGHC901S parts list

No.	Ref Part Code	Midea Part Code	Part name English	Part name Chinese	Qty
1	423225500360	12366200000596	pan support (right)	锅支架组件 右	1
2	261566400601	12971100001422	inner ring burner cap	1# 内环火盖	1
3	261566400501	12971100001440	outer ring burner cap	1# 外环火盖	1
4	64502920	12971100010130	flame spreader1#	喷火器 1#	1
5	261566401700	12971100001429	burner cap 3#	火盖 3#	2
6	64502930	12971100010121	flame spreader 3#	喷火器 3#	2
7	423225400071	12166200000063	knob	旋钮组件	5
8	423320400092	12666200000032	knob waterproof rubber gasket	旋钮防水胶圈	5
9	69416185	12266200A04946	top plate	面板	1
10	423023100037	12966200000316	thermocouple	热电偶组件	1
11	261555602100	12971100001258	ignition needle	点火针	1
12	291600600033	12971100001510	injector 1#(NG)	喷嘴 1#	1
	261566902501	12971100001521	injector 1#(LPG)	喷嘴 1#	1
13	64502940	12971100010128	burner cup 1#	底杯 1#	1
14	423324000012	12166200000091	teminal box	接线盒	1
15	423020300045	17466200000001	power cord	电源线	1
16	261555604802	12971100001253	ignition needle	点火针	2
17	423023100036	12966200000317	thermocouple	热电偶组件	4
18	423229600233	12266200000562	burner cup support	底杯支架	3
19	423226100239	12966200000020	inlet gas tube assembly	进气管组件	1
20	423226200238	12966200000109	aluminum gas tube assembly	配气管组件	1
21	291600600034	12971100001468	injector 3#(NG)	喷嘴 3#	2
	291600600037	12971100001499	injector 3#(LPG)	喷嘴 3#	2
22	64502950	12971100010126	burner cup 3#	底杯 3#	2
23	423226200237	12966200000105	aluminum gas tube assembly	配气管组件	1
24	423226200239	12966200000113	aluminum gas tube assembly	配气管组件	1
25	26201395	12366200003316	valve assembly 1#	阀体组件 1#	1
25	26201400	12366200003306	valve assembly 2#	阀体组件 2#	1
25	26201405	12366200003328	valve assembly 3#	阀体组件 3#	2
25	26201410	12366200003324	valve assembly 4#	阀体组件 4#	1
26	423229600234	12266200000599	valve support	阀体支架	1
27	423225600372	12266200000077	bottom plate	底壳	1
28	26201415	17466200000302	pulse ignition	脉冲点火器	1
29	423020400017	17466200000023	connecting wire	连接线	1
30	423020400020	17466200000025	microswitch connecting line	微动开关连接线	1
31	423020400021	17466200000018	microswitch connecting line	微动开关连接线	1
32	423229600232	12266200000563	burner cup support	底杯支架	1
33	423226200240	12966200000104	aluminum gas tube assembly	配气管组件	1
34	261555604801	12971100001256	ignition needle	点火针	2
35	64502955	12971100010125	burner cup 4#	底杯 4#	1
36	291600600036	12971100001548	injector 4#(NG)	喷嘴 4#	1
	291600600035	12971100001514	injector 4#(LPG)	喷嘴 4#	1
37	423226200241	12966200000110	aluminum gas tube assembly	配气管组件	1
38	64502945	12971100010133	burner cup 2#	底杯 2#	1
39	423229100625	12966200000405	injector 2#(NG)	喷嘴 2#	1
	291600600038	12971100001511	injector 2#(LPG)	喷嘴 2#	1
40	64502935	12971100010131	flame spreader 4#	喷火器 4#	1
41	261566401800	12971100001430	burner cap 4#	火盖 4#	1
42	64502925	12971100010123	flame spreader 2#	喷火器 2#	1
43	261566401600	12971100001428	burner cap 2#	火盖 2#	1
44	423225500412	12366200000624	pan support(middle)	锅支架组件 中	1
45	423225500359	12366200000595	pan support(left)	锅支架组件 左	1

UBGHC901S Wiring diagram

