



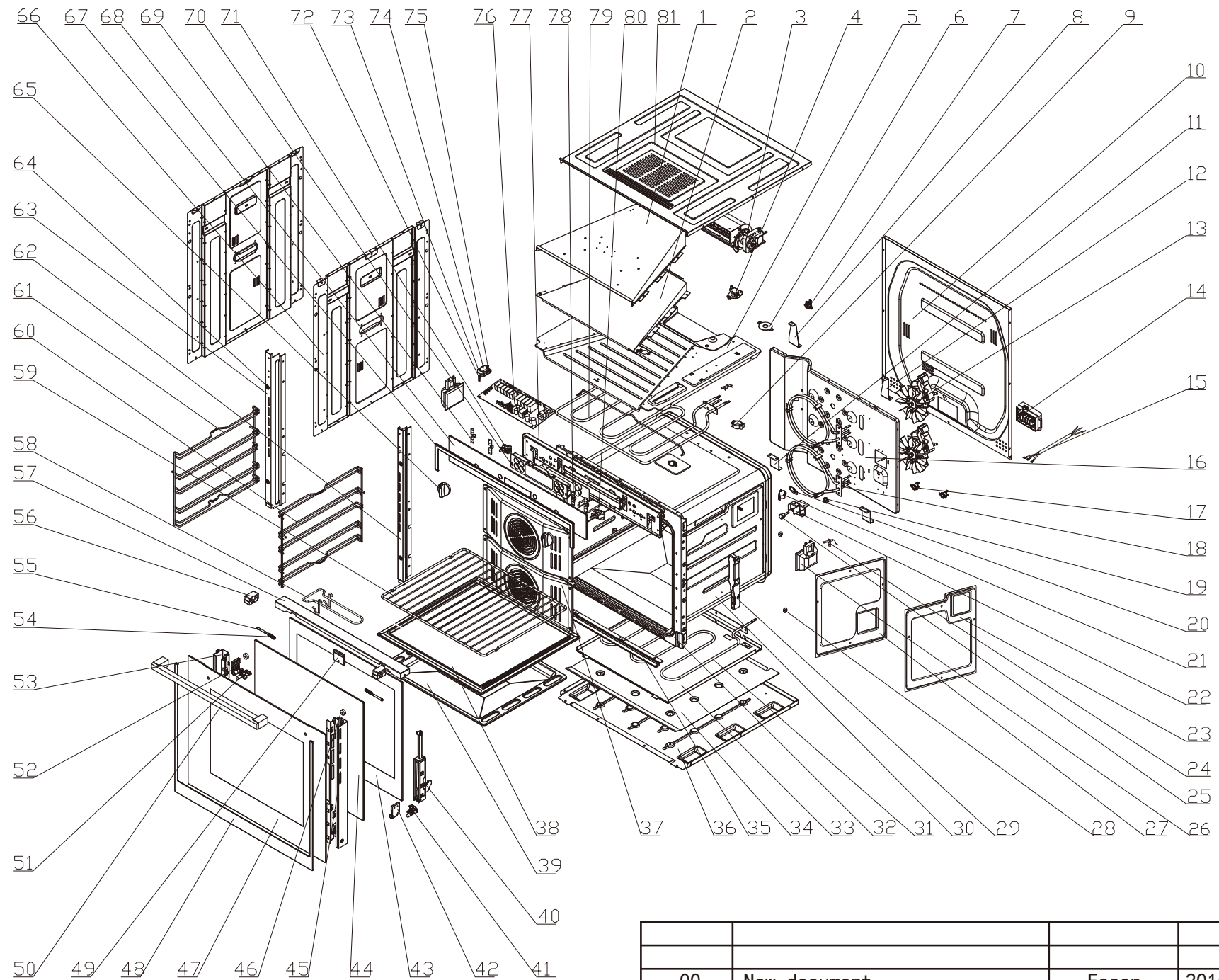
Oven:UBMFTZ60SS.1

Version:00

Date:2015-12-31

Product reference code:UBMFTZ60SS.1

UBMFTZ60SS.1 Exploded drawing



00	New document	Eason	2015.12.31
Index	Modify description	Modified by	Date

UBMFTZ60SS.1 parts list

No.	part code	Part description	Qty	Remark	chinese description
1	33028004	Discharge flue upper cover plate	1		排烟道上盖板-自洁烤箱专用
2	33026004	Discharge flue middle cover plate	1		排烟道中盖板-自洁烤箱专用
3	33313037	Cooling fan assembly	1		散热风机组件-配双排气系统
4	33308006	Overheat protector	1		过热保护器-110℃
5	33027002	Discharge flue baseboard	1		排烟道底板-自洁烤箱专用
6	33215025	Discharge flue baffle plate	1		排烟筒遮挡板(10mm孔)PN-K13-59B
7	33310001	Cooling thermostat	1		散热温控器-65度
8	33027024	Discharge flue baseboard Support block (right)	1		排烟道底板支撑块(右)-AD-K28(J)-07
9	33215019	Chimney	1		排烟筒-AD-K28(J)-10
10	33030026	shell rear cover plate	1		外壳后盖板-AD-K28(J)-05
11	33027030	shell bottom cover connector block	2		外壳底板连接块-AD-K28(J)-16
12	33027023	Discharge flue baseboard Support block (left)	1		排烟道底板支撑块(左)-AD-K28(J)-06
13	33315016	Circulating fan assembly	2		循环风机组件-PN-K14-10
14	33305008	Junction box	1		接线盒奥地利进口
15	32307016	Power cord	1		无头-1.5米-H05VV-F 头部3个鳄鱼齿
16	33016002	Cavity rear support	1		内胆后支架-PN-K14-04
17	33308012	Overheat protector	2		过热保护器-120℃-PN-K19-06
18	33303040	Rear heating element	2		背部电热管-PN-K14-12
19	33301024	mandril nut	1		顶杆螺母-PN-K14-27
20	33004022	clapboard switch bracket fixing block	1		隔板开关支架固定块-AD-K28(S-OS)-02
21	33301022	clapboard micro switch	1		隔板微动开关-PN-K14-25
22	33004008	clapboard switch bracket	1		隔板开关支架-PN-K14-09
23	33039005	right rail base plate	1		右导轨支架垫板-PN-K14-18
24	33323001	Thermometer probe assembly	2		测温探头组件
25	33301023	clapboard micro switch mandril	1		隔板微动开关顶杆-PN-K14-26
26	33317001	Lamp assembly	2		方灯组件
27	33039004	left rail base plate	1		左导轨支架垫板-PN-K14-17
28	33141005	rail rack fixing seat	4		导轨支架固定座-PN-K14-14
29	33005089	hinge fixed board	2		铰链固定板-AD-K28(J)-16
30	33058038	cavity ring assem	1		内胆圈组件(PN-K14-50B)
31	33303002	Bottom heating element	1		底层电热管
32	33018226	Cavity panel	1		内胆面板(全触摸)-AD-K28(S)-10-01
33	33003005	Bottom heating element fixed board	1		底层电热管固定板-AD-K28(J)-11
34	33003006	Bottom insulation fibre heat shield	1		底部保温纤维隔热板-AD-K28(J)-12
35	33027031	Cavity panel under bracing	1		内胆面板下支撑-AD-K25(J)-14
36	33029016	Shell baseboard	1		外壳底板-AD-K28(J)-04
37	33001022	Rear heating element baffle	2		背部电热管挡板-2(PN-K14-06)
38	33316003	clapboard assembly	1		隔板组件
39	33224003	Tray	1		油脂收集盘(K1-08)-新工艺
40	33180023	Hinge assembly-17	2		铰链组件-17号铰链
41	33014141	Inner glass low right fixed block	1		内玻璃右下固定块-AD-K28(J)-20-17
42	33014139	Active shaft right fixed block	1		活动转轴右固定块-AD-K28(J)-20-15
43	33103050	Inner glass	1		内玻璃-AD-K28(JSP)-20-02
44	33104042	Middle glass	1		中间玻璃-AD-K28(J)-20-05
45	33014134	Door frame left bracket	1	Please buy combination	门框左支架-AD-K28(J)-20-01
46	33014135	Door frame right bracket	1		门框右支架-AD-K28(J)-20-02
47	33102656	Door panel	1		门面板-418-AD-K28(J)-20-04H-镀膜
48	33015277	Door panel decorating plate	1		门面板装饰板-IX02-AD-K28(J)-20-14
49	33214005	Handle fixed assembly	2		拉手固定套-PN-K14-60-09
50	33006012	Handle fixed board	1		拉手固定板-黑色亮光喷漆后)
51	33190004	Handle 4	1		4号拉手
52	33014140	inner glass left bottlm fixing board	1		内玻璃左下固定块-AD-K28(J)-20-16
53	33014138	Active shaft left fixed block	1		活动转轴左固定块-AD-K28(J)-20-14
54	33005073	Up door bracket detent spring	2		门上支架卡销弹簧-AD-K28(J)-20-11
55	33005072	Up door bracket detent	2		门上支架卡销-AD-K28(J)-20-10
56	33219019	Middle glass upper fixed block	2		中间玻璃上固定块-AD-K28(J)-20-03
57	33014129	Up door bracket	1		门上支架-AD-K28(J)-20-09
58	33172001	Grasp	1		搁架抓手
59	33170001	shelf	1		搁架
60	33140008	Right rail bracket	1		右导轨支架-PN-K14-16
61	33140007	Left rail bracket	1		左导轨支架-PN-K14-15
62	33014137	shell right bracket	1		外壳右支架-AD-K28(J)-03
63	33014136	shell left bracket	1		外壳左支架-AD-K28(J)-02
64	33239001	Oven fix assembly	4		烤箱安装套
65	32245003	938 metal knob	2		938金属旋钮
66	33032016	Shell left and right side plate	2		外壳左右侧板-AD-K28(J)-09
67	34039003	Control panel decorate	1	Please buy combination	开关面板装饰板-IX04-AD-K28(J)-40-02
68	33101563	Switch panel	1		开关面板(机械触摸双区)-镀膜
69	33006001	Switch panel connect panel	4		开关面板连接板
70	33322008	Screen fixed box	1		显示屏固定盒-PN-K19-02
71	33316006	4 clapboard switch assembly	1		4档隔板开关组件
72	33005006	Door switch slider	1		门开关滑块-K12-80-02
73	33005005	Door switch fixed board	1		门开关固定板-K12-80-01
74	33301020	Door switch	1		门开关-PN-K12-80-04
75	33319002	Door switch spring	1		门开关弹簧-PN-K12-80-03
76	33321020	Touch power board	1		触摸屏电源板-PN-K14-23
77	33018200	Switch panel fixed board	1		开关面板固定板(配机械自洁显示屏)
78	33321074	Mechanical touch display board	1		触摸显示屏-AD-K28(S-OS)-03
79	33303094	Top heating element	1		顶层电热管
80	33316005	Thermostat switch assembly	1		调温开关组件
81	33031018	shell upper cover plate	1		外壳上盖板-AD-K28(J)-08