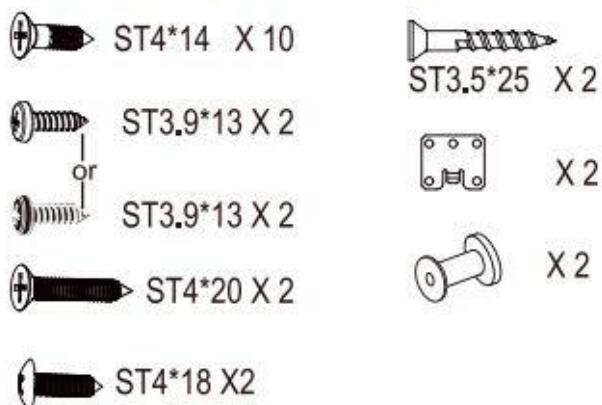




Dishwasher:UBMIDW45

45cm door template part number 16176000001398

Installation Kit part number 670400058002



Product reference code:UBMIDW45

Modified by:Eason

Modification:

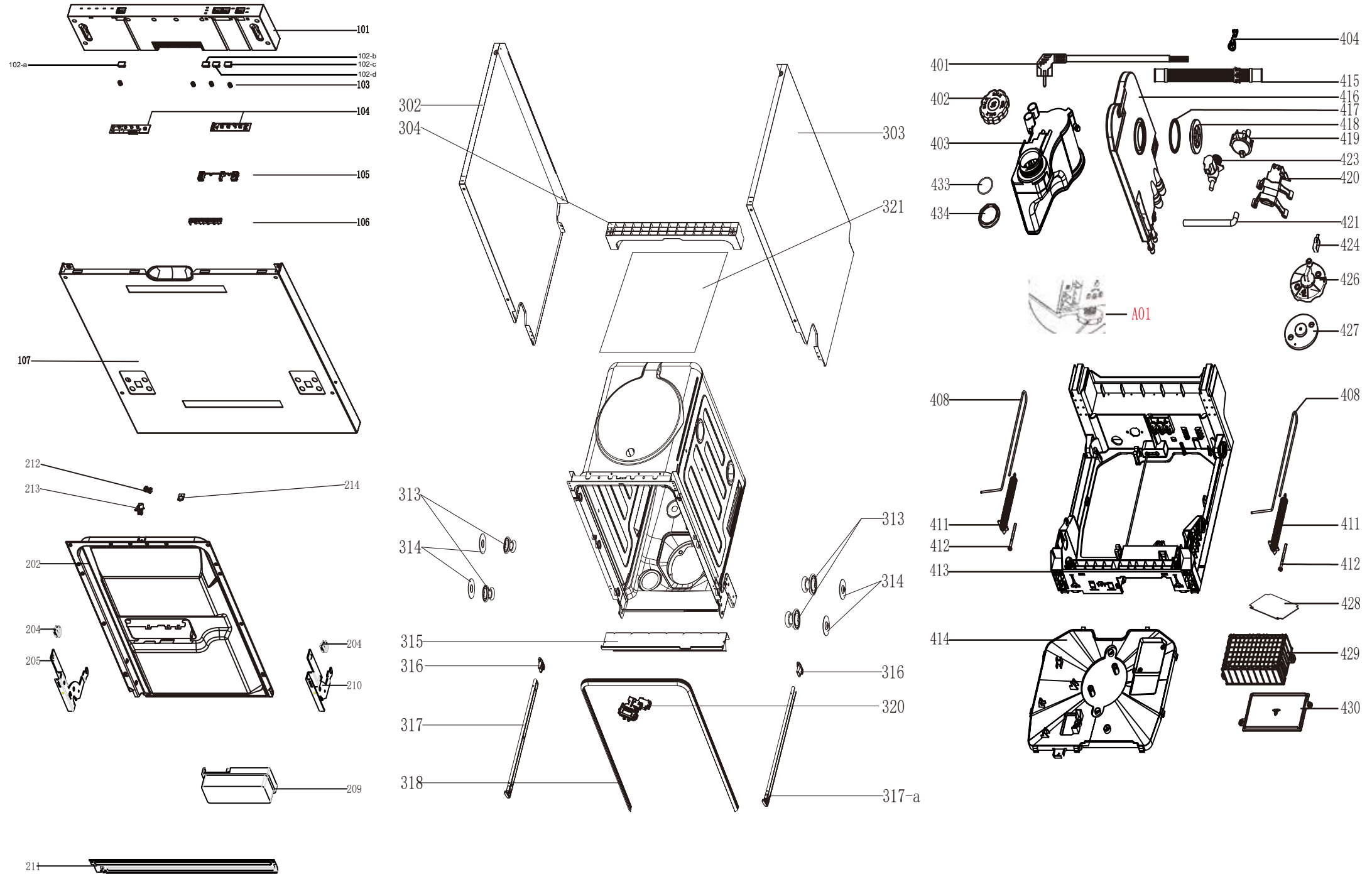
00_2016.05.31 New document

01_2017.01.13 Add No.428

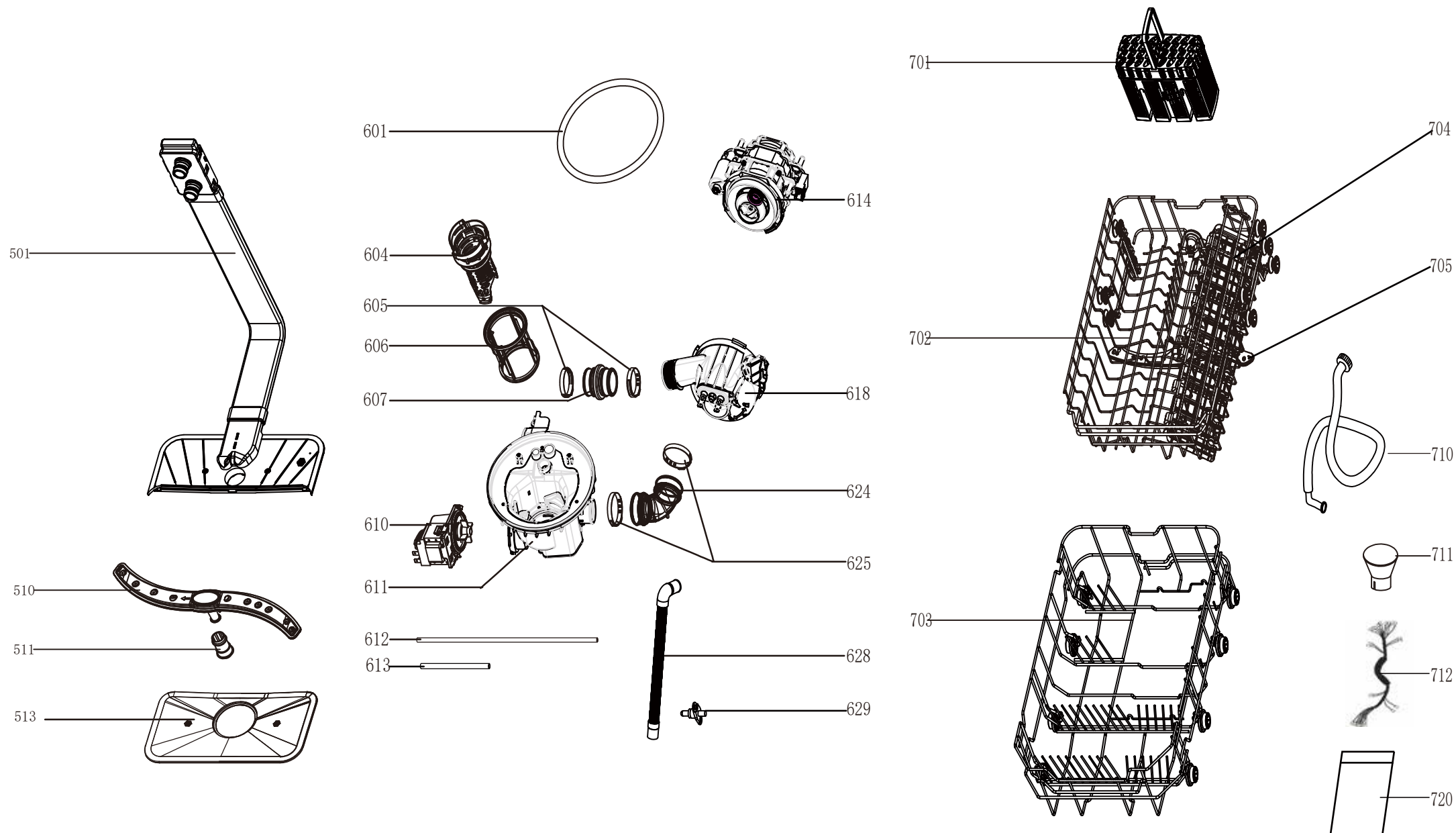
02_2017.04.28 Add No.A01

03_2018.02.09 Add No.102/104/105/106/420/428/601/611/703/710

UBMIDW45 Exploded drawing(1)



UBMIDW45 Exploded drawing(2)



UBMIDW45 parts list

NO.	Ref No.	Midea new Part No.	Description	Qty.
103	672000100089	12976000000141	button spring	4
107	672001801323	122760000006429	out door	1
202	672002200524	122760000005301	inner door assembly	1
204	672002300049	121760000003629	friction strip hooking clamping	2
205	672001400062	122760000001731	left hinge assembly	1
209	674000800070	174760000001467	dispenser	1
210	672001400061	122760000001778	right hinge assembly	1
211	672001200070	122760000001812	hinge join board	1
212	673001320041	121760000008565	Lock buckle fixing block	1
213	673001320039	121760000009495	door lock hook	1
214	673000905033	126760000001038	Waterproof silica gel pad	1
302	672001607099	122760000000979	left side panel assembly	1
303	672001600610	122760000001132	right side panel	1
304	673003100025	121760000003871	upper back support	1
313	673001401022	121760000010412	rail support assembly	4
314	673001300555	121760000008573	basket guider supporting holder	4
315	672002300069	122760000001836	anti-noise borad	1
316	673001300639	121760000008426	upper basket guider link stopper(back)	2
317	672001700025	122760000001357	upper basket guider(left)	1
317-a	672001700026	122760000001360	upper basket guider(right)	1
318	673001700133	126760000000913	tank gasket	1
320	674000301022	174760000000035	door switch	1
321	673000102016	121760000010261	back cover board	1
401	674000000186	174760000000312	power cord	1
402	673002800187	121760000010640	softener cover	1
403	674000700064	174760000001365	softener	1
404	673001400083	121760000009490	power cord clasper	1
408	673001001010	129760000000399	door rope	2
411	672000100116	129760000000134	door spring assembly	2
412	672001100016	129760000001001	adjust screw of door spring	2
413	673000100079	121760000003011	base tray	1
414	673000101209	121760000003088	base cover	1
415	673000900354	126760000000138	drain hose assembly	1
416	673002700611	121760000003906	air breather assembly	1
417	673001500107	126760000000713	seal	1
418	673001600088	121760000009541	air breaker nut	1
419	674000302020	174760000001222	pressure switch	1
421	673000900289	126760000000140	inlet hose of air breather	1
423	674000200054	174760000001144	inlet valve	1
424	674010030006	174760000001137	overflow switch	1
426	673001400414	121760000003125	overflow switch seat	1
427	673001490013	128760000000050	sleeve cover	1
428	25107600	171760000014765	PCB	1
429	673002400223	121760000003751	pcb seat	1
430	673002400224	121760000003853	PCB Box	1
433	673001500119	126760000000707	softener gasket	1
434	673001600074	121760000009513	softener nut	1
501	673000903005	121760000009430	inner pipe	1
510	673000330028	121760000009195	lower sprayer assembly	1
511	673001300548	121760000008645	sprayer seat	1
513	673002500135	121760000003700	plane filter	1
604	673001300644	121760000009640	filter handle	1
605	672000700007	129760000000327	396 clamp	2
606	673002500111	121760000003676	cylinder filter	1
607	673000900406	126760000000146	inlet pipe	1
610	674000600168	11001011000449	Permanent magnet synchronous pump	1
612	673000902001	126760000000651	pvc pipe	1
613	673000902003	126760000000169	Outletpipe	1
614	674005600112	174760000001561	induction pump	1
618	674001100084	174760000001408	heating elements	1
624	673000900407	126760000000100	inlet pipe	1
625	672000701001	129760000000308	clamp	2
628	673000903020	126760000000954	inner drain pipe	1
629	674000900053	171760000000311	thermostat	1
701	673003200057	121760000002729	cutlery basket	1
702	672000810638	129760000001553	Upper basket	1
704	673003200058	121760000002821	Knife and fork rack	1
705	673000300147	121760000009231	Spray arm	1
711	673002200165	121760000010312	salt filler	1
712	674000101056	174760000000812	wiring harness	1
720	670400047004	129760000000292	accessory bag	1
A01	673001400413	121760000009726	adjustable feet for BI model	3
102-a	25107550	121760000016725	Button	1
102-b	25107555	121760000016724	Button	1
102-c	25107560	121760000016727	Button	1
102-d	25107565	121760000016728	Button	1
104	62100410	171760000014763	Dashboard	1
105	25107575	121760000016705	delay and half load light guide	1
106	25107580	121760000016703	program light guide	1
420	25107295	122760000008925	pump support ASSEMBLY	1
428	25107600	171760000014765	PCB	1
601	60501365	126760000001461	seals	1
611	25107605	121760000016228	Sumpassembly	1
703	25107470	129760000003125	lower basket assembly	1
710	25107255	121760000015504	Inlet Pipe Assembly	1

UBMIDW45 Wiring diagram

220-240V/50HZ

