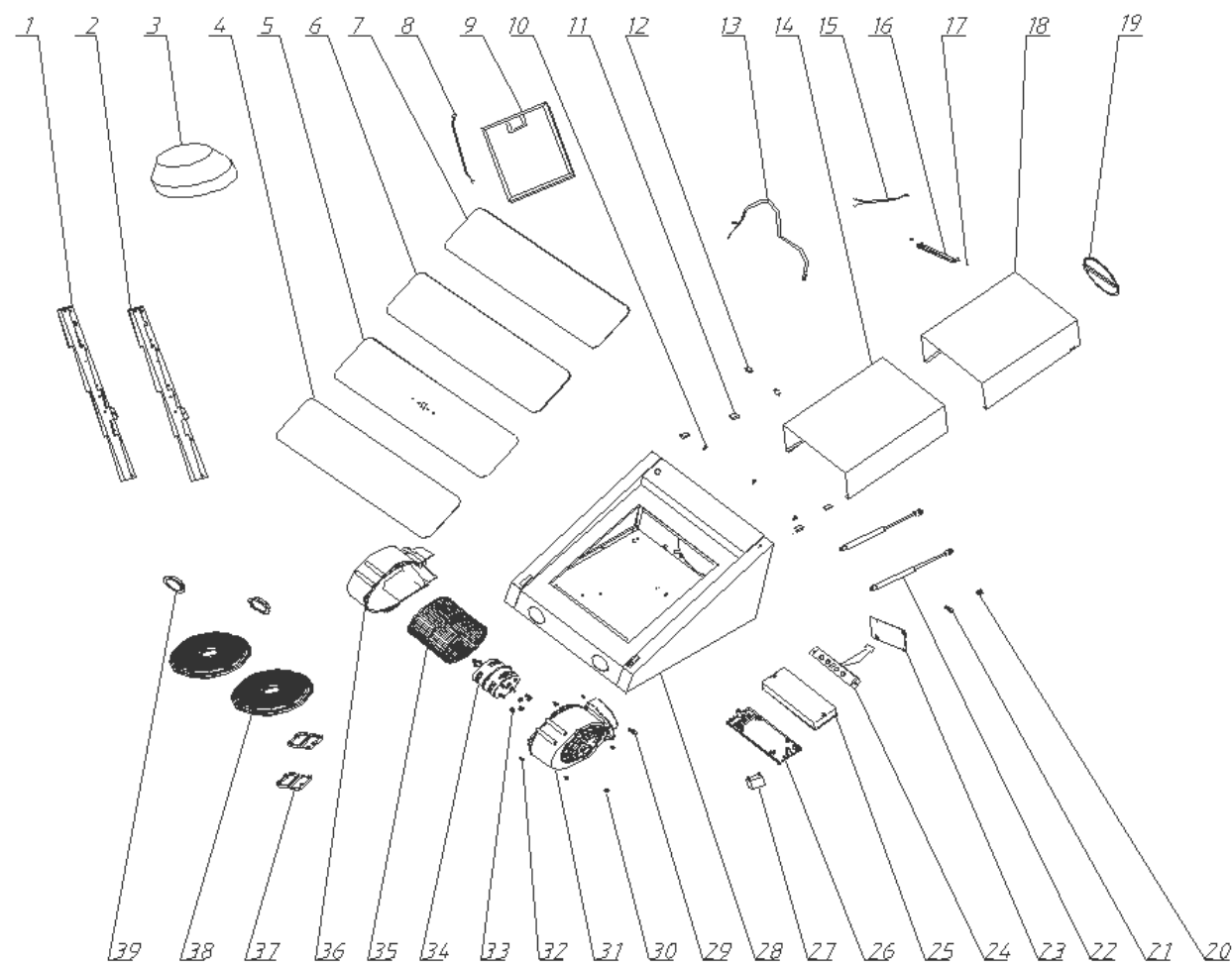


# Angled Glass Cooker Hood

Model Number UBDCH60BK

Parts Manual

# Exploded Drawing



02			
01			
00			
Index	Modify description	Modified by	Date

# Parts List

S/N	Ref.	Description	QTY	REMARK
39	7135050040	LED LAMP	2	
38	7003080100	CHARCOAL FILTER	2	Optional
37	7121105230	PROTECTION WIRE COVER	2	
36	7121103020	MOTOR HOUSING - LEFT	1	
35	7121503070	CV BLADE WHEEL	1	
34	7131080020	MOTOR	1	
33	9131050002	NUT M5	4	
32	9111351201	SCREW 3.5*12	7	
31	7121103010	MOTOR HOUSING - RIGHT	1	
30	9132050002	NUT M5	1	
29	7121503080	WIRE GROOVE 2	1	
28	7005018100	BODY COMPONENTS	1	
27	7132030030	CAPACITANCE	1	
26	7121105040	POWER SUPPLY BOX	1	
25	7121105050	COVER - POWER SUPPLY BOX	1	
24	7134050120	CONTROL PCB	1	
23	7134050130	POWER PCB	1	
22	7211405050	AIR SPRING SUPPORTS	2	
21	7121104100	WIRE GROOVE 3	1	
20	7121104130	PROTECTION WIRE COVER	1	
19	7121103030	RETURN VALVE	2	
18	7110105443	CHIMNEY - INNER	1	
17	9113400801	SCREW ST4*8	3	
16	7112106081	BRACKET - CHIMNEY	1	
15	7137100031	WIRING - LAMP	1	
14	7110105433	CHIMNEY - OUTER	1	
13	7136001707	POWER CORD	1	
12	7118105011	HINGE	2	

11	7121105320	FIXING CLAMP - CHIMNEY	4	
10	9113400801	SCREW ST4*8	2	
9	7001060100	ALUMINIUM FILTER	1	
8	7137100045	WIRE 1400 - SWITCH	1	
7	7005018400	GLASS - 3	1	
6	7005018300	GLASS - 2	1	
5	7005018200	GLASS - 1	1	
4	7005018300	GLASS - 2	1	
3	7121105350	OUTLET TUBE REDUCER 150 TO 120MM	1	
2	7110105613	GLASS BRACKET - RIGHT	1	
1	7110105603	GLASS BRACKET - LEFT	1	