



Gas Hob:GH600

Product reference code:UBGH901S

Modified by:Eason

Modification:

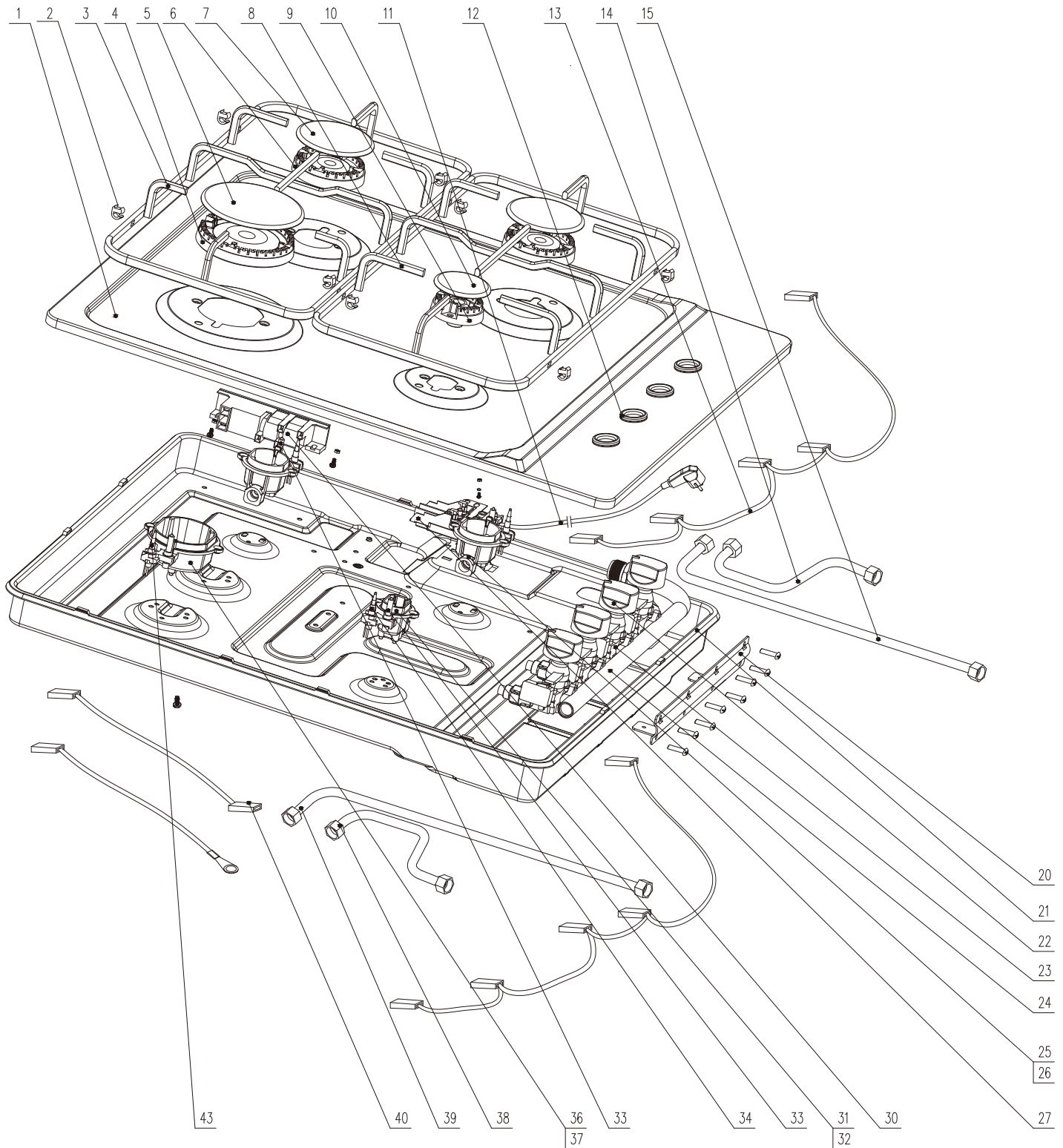
00_2013.05.22 New document

01_2014.11.19 Add No.21/25/30 LPG nozzle part number

02_2015.07.06. Add No.39/40

03_2018.08.08 Update all part number for part manual

GH600 Exploded drawing



GH600 parts list

Part number of the gas valve up to the end of 2016 is 423225900499

No.	Ref code	Midea Part Code	Part name English	Qty	Part name Chinese
1	423229800510	12266200A01482	top plate	1	面板
2	423320400062	12666200000007	pan support rubber mat	8	锅支架胶垫
2	423320400071	12666200000001	pan support rubber mat	2	锅支架胶垫
3	423225500235	12366200000475	pan support components (left)	1	锅支架组件 (左)
4	261566800800	12971100001459	sprayer 2#	1	喷火器 2#
5	261566400100	12971100001437	burner cap 2#	1	火盖 2#
6	261566800900	12971100001461	sprayer 3#	2	喷火器 3#
7	261566400300	12971100001431	burner cap 3#	2	火盖 3#
8	423225500236	12366200000476	pan support components (right)	1	锅支架组件 (右)
9	261566801000	12971100001457	sprayer 4#	1	喷火器 4#
10	261566400200	12971100001427	burner cap 4#	1	火盖 4#
11	423020300023	17466200000040	power cord	1	电源线
12	423320400061	12666200000063	knob waterproof rubber ring	4	旋钮防水胶圈
13	423020400018	17466200000024	wire of Micro Switch	2	微动开关连接线
14	423226200370	12966200000563	aluminum gas tube (right front)	1	配气管组件 (右上)
15	423226200371	12966200000564	aluminum gas tube (right rear)	1	配气管组件 (右下)
20	423229600252	12266200000854	valve bracket	1	阀体支架
21	423225600075	12266200000220	bottom plate	1	底壳
22	423320000056	12166200000028	knob components	4	旋钮组件
23	423225900787	12366200000204	flame-out protection valve 4#	1	熄火保阀 4#
	423225900788	12366200000205	flame-out protection valve 3#	2	熄火保阀 3#
	423225900789	12366200000189	flame-out protection valve 2#	1	熄火保阀 2#
24	423226100193	12966200000041	inlet pipe components	1	进气管组件
25	291600600034	12971100001468	injector 3# NG 0.97	2	喷嘴 3#
26	291600100077	12971100001285	burner cup 3#	2	底杯 3#
27	423324000012	12166200000091	terminal box	1	接线盒
30	423023200068	17466200000036	ignition box	1	脉冲点火器
31	291600600036	12971100001548	injector 4# NG 0.72	1	喷嘴 4#
32	291600100078	12971100001295	burner cup 4#	1	底杯 4#
33	261555604800	12971100001261	ignition needle components	1	点火针 220mm
	291600200003	12971100001239	ignition needle components	3	点火针 600mm
34	423023100029	12966200000320	Thermocouple components	2	热电偶
36	291600600033	12971100001510	injector 2# NG 1.3	1	喷嘴 2#
37	291600100076	12971100001284	burner cup 2#	1	底杯 2#
38	423226200368	12966200000561	aluminum gas tube (left front)	1	配气管组件 左上
39	423226200369	12966200000562	aluminum gas tube (left rear)	1	配气管组件 左下
40	423020400017	17466200000023	connection wire	1	连接线
43	423023100028	12966200000319	Thermocouple components	2	热电偶组件
annex	291600600038	12971100001511	injector 2# LPG 0.85	1	喷嘴 平孔 0.85 G30 30mbar
	291600600037	12971100001499	injector 3# LPG 0.65	2	喷嘴 平孔 ϕ 0.65 G30 30mbar
	291600600035	12971100001514	injector 4# LPG 0.50	1	喷嘴 平孔 ϕ 0.50 G30 30mbar
	423229600165	12266200000582	fixing brackets	4	
	424020100060	11303309000019	Screw M4*14	4	

GH600 Wiring diagram

