



Gas Hob:UBGHC701S

Product reference code:UBGHC701S

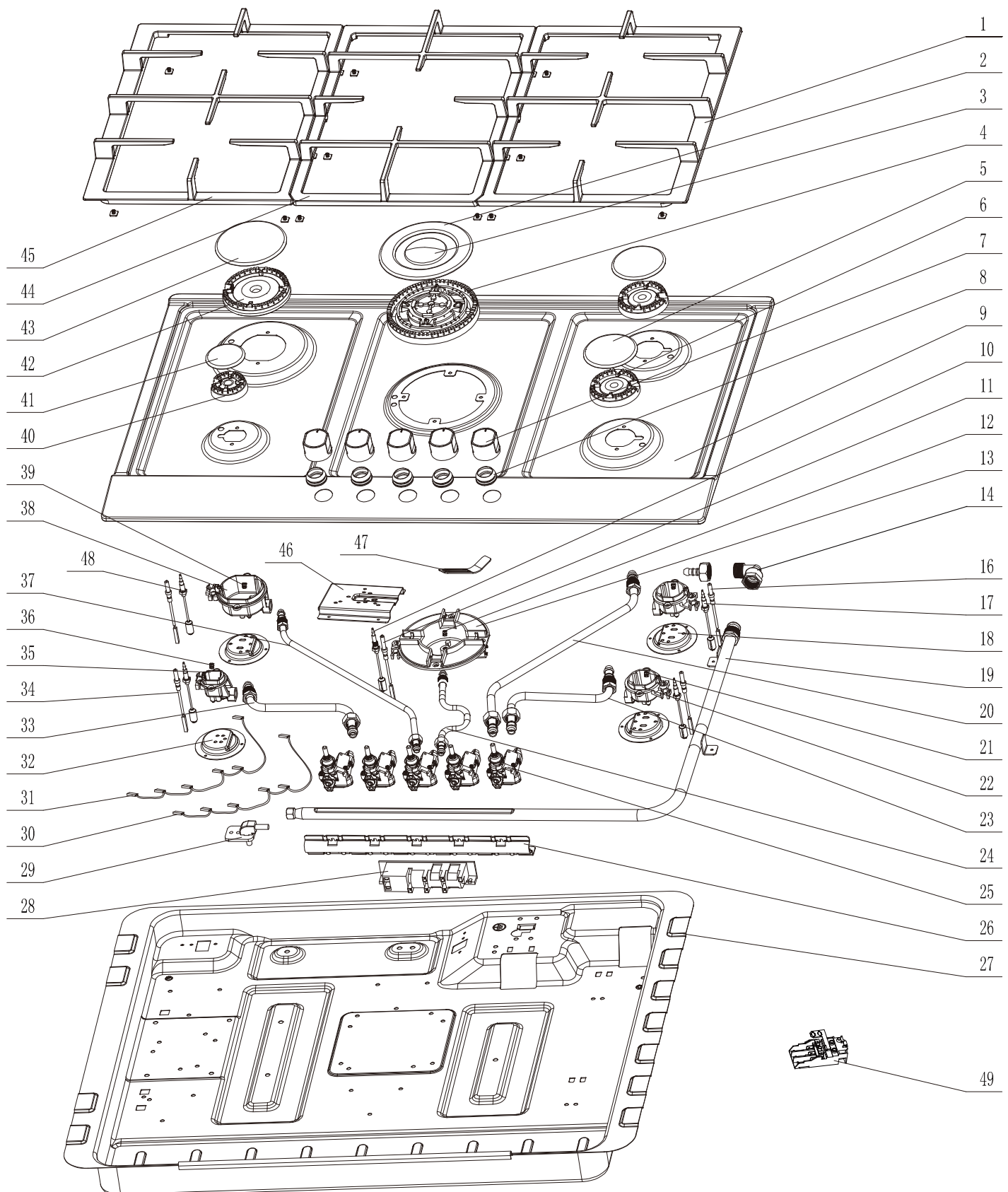
Modified by:Eason

Modification:

00_2017.10.06 New document

01_2018.09.21 Update No.10/17/20/23/24/25/33/37/48

UBGHC701S Exploded drawing



UBGHC701S parts list

No.	Part Code	Midea Part Code	Part name English	Part name Chinese	Qty	Remark
1	423225500369	12366200000591	pan support	锅支架组件	1	
2	261566400501	12971100001440	burner cap 1# outer	火盖 1# 外环	1	
3	261566400601	12971100001422	burner cap 1# inner	火盖 1# 内环	1	
4	261566801300	12971100001455	sprayer 1#	喷火器 1#	1	
5	261566401700	12971100001429	burner cap 3#	火盖 3#	2	
6	261566800900	12971100001461	sprayer 3#	喷火器 3#	2	
7	423225400071	12166200000063	knob assembly	旋钮组件	5	
8	423320400061	12666200000063	knob water proof rubber ring	旋钮防水胶圈	5	
9	62902180	12266200A04183	top plate	面板	1	
10	291601000004	12971100001711	Thermocouple	热电偶	1	
11	261555602100	12971100001258	ignition needle	点火针	1	
12	423229100625	12966200000405	injector 1#	喷嘴 1#	1	
13	291600100079	12971100001296	burner cup 1#	底杯 1#	1	
14	423229200009	12966200000332	Elbow	弯头	1	
16	423023500078	12966200000323	ignition needle	点火针	3	
17	291601000002	12971100001713	Thermocouple	热电偶	2	
18	423229600244	12266200000595	burner cup support	底杯支架	2	
19	423226100240	12966200000021	aluminum gas tube	进气管组件	1	
20	423226200254	12966200000076	aluminum gas tube	配气管组件	1	new (from 2017.09)
	25108890	12966200001612				old
21	291600600034	12971100001468	injector 3#	喷嘴 3#	2	
22	291600100077	12971100001285	burner cup 3#	底杯 3#	2	
23	423226200255	12966200000116	aluminum gas tube	配气管组件	1	new (from 2017.09)
	25108895	12966200001615				old
24	423226200253	12966200000115	aluminum gas tube	配气管组件	1	new (from 2017.09)
	25108900	12966200001619				old
25	25108105	12366200001972	flame-out protection valve	熄火阀 2#	1	new (from 2017.09)
	26201400	12366200003306				old
	25108110	12366200001979	flame-out protection valve	熄火阀 1#	1	new (from 2017.09)
	26201395	12366200003316				old
	25108115	12366200001987	flame-out protection valve	熄火阀 3#	1	new (from 2017.09)
	26201410	12366200003324				old
	25108120	12366200001992	flame-out protection valve	熄火阀 2#	2	new (from 2017.09)
	26201405	12366200003328				old
26	423229600234	12266200000599	valve support	阀体支架	1	
27	423225600374	12266200000079	bottom plate	底壳	1	
28	26201390	17466200000302	pulse ignition	脉冲点火器	1	
29	423020300045	17466200000001	power cord	电源线	1	
30	423020400020	17466200000025	wire of micro switch	微动开关连接线 \	1	
31	423020400021	17466200000018	wire of micro switch	微动开关连接线 \	1	
32	423229600235	12266200000596	burner cup support	底杯支架	2	
33	423226200251	12966200000081	aluminum gas tube	配气管组件	1	new (from 2017.09)
	25108905	12966200001618				old
34	261555604800	12971100001261	ignition needle	点火针组件	1	
35	291600100078	12971100001295	burner cup 4#	底杯 4#	1	
36	291600600036	12971100001548	injector 4#	喷嘴 4#	1	
37	423226200252	12966200000108	aluminum gas tube	配气管组件	1	new (from 2017.09)
	25108910	12966200001605				old
38	291600100076	12971100001284	burner cup 2#	底杯 2#	1	
39	291600600033	12971100001510	injector 2#	喷嘴 2#	1	
40	261566801000	12971100001457	sprayer 4#	喷火器 4#	1	
41	261566401800	12971100001430	burner cap 4#	火盖 4#	1	
42	261566800800	12971100001459	sprayer 2#	喷火器 2#	1	
43	261566401600	12971100001428	burner cap 2#	火盖 2#	1	
44	423225500370	12366200000495	pan support	锅支架组件	1	
45	423225500371	12366200000494	pan support	锅支架组件	1	
46	423229600230	12266200000597	burner cup support	底杯支架	1	
47	261520501101	12971100001131	bottom plate bracket	底壳固定片	4	
48	291601000003	12971100001714	Thermocouple	热电偶	2	
49	423324000012	12166200000091	Terminal Box	接线盒	1	
Accessory	291600600037	12971100001499	injector 3# G30 mbar	喷嘴 平孔 φ0.65 长8.8mm 豪立 3#底杯 G30 30mbar	2	
	291600600038	12971100001511	injector 2# G30 mbar	喷嘴 平孔 φ0.85 长8.8mm 豪立 2#底杯 G30 30mbar	1	
	291600600035	12971100001514	injector 4# G30 mbar	喷嘴 平孔 φ0.50 长8.8mm 豪立 4#底杯 G30 30mbar	1	
	261566902501	12971100001521	injector 1# G30 mbar	喷嘴 平孔 φ0.93	1	
	423229600165	12266200000582	fixing brackets	底壳固定片	4	
	424020100060	11303309000019	Screw M4*14	十字槽盘头自攻锁紧螺钉	4	

UBGHC701S Wiring diagram

